



PEARL

Tracer advection in an idealised river bend with groynes

Jalali, Mohammad Mahdi; Borthwick, Alistair G.L.

Published in:

Journal of Hydrodynamics

DOI:

[10.1007/s42241-018-0085-7](https://doi.org/10.1007/s42241-018-0085-7)

Publication date:

2018

Link:

[Link to publication in PEARL](#)

Citation for published version (APA):

Jalali, M. M., & Borthwick, A. G. L. (2018). Tracer advection in an idealised river bend with groynes. *Journal of Hydrodynamics*, 30(5), 780-790. <https://doi.org/10.1007/s42241-018-0085-7>

All content in PEARL is protected by copyright law. Author manuscripts are made available in accordance with publisher policies. Wherever possible please cite the published version using the details provided on the item record or document. In the absence of an open licence (e.g. Creative Commons), permissions for further reuse of content should be sought from the publisher or author.



Tracer Advection in an Idealised River Bend with Groynes

Mohammad Mahdi Jalali¹, Alistair G. L. Borthwick²

^{1,2}Institute for Energy Systems, School of Engineering, The University of Edinburgh, Edinburgh, UK

¹ E-mail: s1370516@ed-alumni.net

Abstract: This paper presents numerical simulations of particle advection in the bend of an open channel containing groynes, which is an idealised form of a shallow river bend in a wide river. The flow field is computed using a boundary-fitted solver of the non-orthogonal, curvilinear shallow water equations. The computational grid is generated by solving Poisson-type elliptic partial differential equations using an iterative multi-grid scheme for prescribed boundary coordinates. The shallow water equations are discretised with finite differences in space, and 4th order Runge-Kutta integration in time. Tracers introduced at specific initial locations have their trajectories computed using Lagrangian particle tracking. The numerical shallow flow model is verified by comparison to the analytical solution of fully developed flow in an open channel. The combined shallow flow and Lagrangian particle-tracking model is then used to simulate the advection of tracer particles in a rectangular channel containing a pair of parallel groynes, and tracer particles in a curved open channel containing groynes, of dimensions roughly equivalent to a Danube river bend.

Key words: Shallow water equations; tracer advection; Lagrangian particle; curvilinear coordinates system; river bend; groynes.

Introduction

Curved lateral boundaries and morphological features in a river affect the flow, and may reduce flood capacity at a river bend after increased runoff from extreme rainfall and snowmelt events. Enhanced sedimentation may occur at river bends due to increased depositional processes as a flood subsides. Moreover, river sediment deposited after flood inundation may have major societal, economic, and environmental repercussions, and so is an important factor in flood risk management. In practice, groynes are used to trap river sediment, prevent bank erosion, and attenuate the flow in large rivers^[1]. Although groynes have advantages regarding reduced flood risk, they are expensive to construct and maintain, and can affect navigation because of flow separation leading to the formation of turbulent eddies and larger-scale recirculation zones. It is therefore a challenge for engineers to design groynes that control the river, while meeting flood risk, navigation and economic cost objectives. A particular case of interest is the Danube River in Europe, where the advection and dispersion of sediment particles is known to be particularly complicated in the vicinity of groynes^[2] and other hydraulic control structures^[3]. In large rivers, mixing occurs as a combination of local advection and dispersion processes that are enhanced in strongly sheared flows, such as turbulent eddies

generated by flow separation at obstacles such as bridge piers and projecting groynes, and by the roll-up of bed boundary layer into hairpin vortices. Species transport is greatly affected by mixing, and influences water quality^[4]. Field observations, laboratory studies, and numerical simulation all offer insights into advection and mixing processes in large rivers^[1].

Over the past forty or so years, considerable effort has gone into the development of river flow models that can accommodate complicated domains with curved and/or irregular boundaries. A variety of grid generation methods have been proposed^[5] including structured rectangular and curvilinear, boundary-fitted grids, unstructured grids, sliding grids. Of the various methods available for grid generation, structured boundary-fitted grids are particularly appealing for shallow water applications in domains where the flow boundaries conform approximately to smooth curves. Boundary-fitted grids are generated by mapping an arbitrary-shaped domain onto a simple rectangular shape, or a series of interconnected rectangles^[6]. Johnson and co-workers^[7-8] developed the first solvers of the shallow water equations on orthogonal grids. Borthwick and Barber^[9] solved the non-orthogonal shallow water Stokes equations with Cartesian velocity components for jet-forced flow in a circular reservoir. Curvilinear

grid approaches are used routinely nowadays for simulations of shallow flow hydrodynamics by means of single layer and multi-layer models, such as encapsulated in Delft3D for example.

Meanwhile particle-tracking methods, which involve the introduction of discrete particles into the flow domain and the numerical integration of the pure advection equation, have also been extensively utilised in water quality modelling of large rivers. In the context of chaotic advection near a groyne structure, Weitbrecht *et al.*^[3] used 2-D particle tracking to examine advection in a rectangular channel flow with groynes. From a laboratory perspective, Zsugyel *et al.*^[2] utilised PIV to examine the nonlinear trajectories of particles near a groyne in a rectangular channel.

The present study uses a curvilinear shallow flow numerical solver to simulate steady state flow fields in a curved open channel, and, with the aid of bilinear interpolation of the velocity field, uses Lagrangian particle tracking to simulate advection and mixing processes in the vicinity of a groyne inserted in the channel bend. The dimensions of the channel and groyne, and the flow conditions, are selected to be roughly similar to those in an idealised bend of the River Danube in Hungary. The paper is structured as follows. Section 1 describes the boundary-fitted grid generator. Section 2 presents details of the finite difference numerical solver of the curvilinear shallow water equations. Section 3 summarises the particle-tracking methodology. Section 4 presents results obtained of simulations of flow around a channel bend, and particle advection in the bend. The main conclusions are listed in Section 5.

1. Boundary-fitted grid generator

The boundary-fitted grid generator involved iterative solution of a pair of elliptic partial differential equations derived from the following Poisson equations that map between the Cartesian and curvilinear coordinate systems^[6]:

$$\frac{\partial^2 \xi}{\partial x^2} + \frac{\partial^2 \xi}{\partial y^2} = P(x, y) \quad (1)$$

and

$$\frac{\partial^2 \eta}{\partial x^2} + \frac{\partial^2 \eta}{\partial y^2} = Q(x, y) \quad (2)$$

where x and y are Cartesian co-ordinates in the physical plane, ξ and η are curvilinear, boundary-fitted coordinates in the transformed plane, and P and Q are expressions used to concentrate ξ – lines and η – lines, if required. Using the chain rule, the governing Poisson equations are transformed from the Cartesian

system to the curvilinear, boundary-fitted system where the boundaries form a rectangle in transformed system. Letting $x = f(\xi, \eta)$ and $y = g(\xi, \eta)$, then the Jacobian of x and y with respect to ξ and η is denoted by $J = \frac{\partial(x, y)}{\partial(\xi, \eta)}$. The resulting transformed grid generation equations are:

$$\alpha x_{\xi\xi} - 2\beta x_{\xi\eta} + \gamma x_{\eta\eta} = -J^2(Px_{\xi} + Qx_{\eta}) \quad (3)$$

and

$$\alpha y_{\xi\xi} - 2\beta y_{\xi\eta} + \gamma y_{\eta\eta} = -J^2(Py_{\xi} + Qy_{\eta}) \quad (4)$$

in which

$$\alpha = x_{\eta}^2 + y_{\eta}^2, \quad \beta = x_{\xi}x_{\eta} + y_{\xi}y_{\eta}, \quad \gamma = x_{\xi}^2 + y_{\xi}^2.$$

The elliptic grid generation equations (3-4) are solved as a boundary value problem, after discretization using second-order central differences and rearrangement to give:

x co-ordinate

$$\begin{aligned} x_{i,j} = & \frac{1}{2(\alpha_{i,j} + \gamma_{i,j})} \left[x_{\xi\xi(i+1,j)} \left(\alpha_{i,j} + \frac{J_{i,j}^2 P_{i,j}}{2} \right) + x_{\xi\xi(i-1,j)} \left(\alpha_{i,j} - \frac{J_{i,j}^2 P_{i,j}}{2} \right) \right. \\ & + x_{\eta\eta(i,j+1)} \left(\gamma_{i,j} + \frac{J_{i,j}^2 Q_{i,j}}{2} \right) + x_{\eta\eta(i,j-1)} \left(\gamma_{i,j} - \frac{J_{i,j}^2 Q_{i,j}}{2} \right) \\ & \left. - \frac{\beta_{i,j}}{2} (x_{\xi\eta(i+1,j+1)} - x_{\xi\eta(i+1,j-1)} - x_{\xi\eta(i-1,j+1)} + x_{\xi\eta(i-1,j-1)}) \right] \quad (5) \end{aligned}$$

y co-ordinate

$$\begin{aligned} y_{i,j} = & \frac{1}{2(\alpha_{i,j} + \gamma_{i,j})} \left[y_{\xi\xi(i+1,j)} \left(\alpha_{i,j} + \frac{J_{i,j}^2 P_{i,j}}{2} \right) + y_{\xi\xi(i-1,j)} \left(\alpha_{i,j} - \frac{J_{i,j}^2 P_{i,j}}{2} \right) \right. \\ & + y_{\eta\eta(i,j+1)} \left(\gamma_{i,j} + \frac{J_{i,j}^2 Q_{i,j}}{2} \right) + y_{\eta\eta(i,j-1)} \left(\gamma_{i,j} - \frac{J_{i,j}^2 Q_{i,j}}{2} \right) \\ & \left. - \frac{\beta_{i,j}}{2} (y_{\xi\eta(i+1,j+1)} - y_{\xi\eta(i+1,j-1)} - y_{\xi\eta(i-1,j+1)} + y_{\xi\eta(i-1,j-1)}) \right] \quad (6) \end{aligned}$$

where the subscripts i and j denote nodal positions in the transformed mesh, and the transformed mesh incremental lengths $\Delta\xi$ and $\Delta\eta$ are taken to be unity for convenience. In order to generate the grid, Equations (5-6) are solved iteratively using the multi-grid technique^[10], with boundary values prescribed as coordinates demarking the channel walls and open boundaries.

2. Shallow water equations

The shallow water equations are commonly

used to model free surface, environmental flows where the depth is shallow, waves are long, and vertical motions of the water are sufficiently small that they may be neglected (i.e. hydrostatic pressure is assumed). The shallow water equations may be derived by depth-integration of the Reynolds-averaged continuity and Navier-Stokes momentum equations that are obtained from mass and momentum balances across an elemental volume. We denote the total depth as $h = h_s + \zeta$, where h_s is the still water depth and ζ is the free surface displacement in the vertical direction above still water level. Defining z as the vertical elevation above still water level, the continuity equation obtained as the incompressible version of the mass conservation equation is depth-integrated from the bed at $z = -h_s$ to the free surface at $z = \zeta$, giving

$$\int_{-h_s}^{\zeta} \frac{\partial \bar{u}}{\partial x} dz + \int_{-h_s}^{\zeta} \frac{\partial \bar{v}}{\partial y} dz + \int_{-h_s}^{\zeta} \frac{\partial \bar{w}}{\partial z} dz = 0, \quad (7)$$

where \bar{u} , \bar{v} and \bar{w} are the Reynolds-averaged mean fluid velocity components in the Cartesian x , y and z directions. Introducing depth-averaged velocity components in the Cartesian x , y directions (satisfying the first mean value theorem of integration),

$$U = \frac{1}{h} \int_{-h_s}^{\zeta} \bar{u} dz \quad \text{and} \quad V = \frac{1}{h} \int_{-h_s}^{\zeta} \bar{v} dz, \quad (8)$$

and applying Leibnitz's formula for differentiation of an integral, and applying free surface and bed boundary conditions, the mass conservation shallow water equation is obtained as:

$$\frac{\partial \zeta}{\partial t} + \frac{\partial(Uh)}{\partial x} + \frac{\partial(Vh)}{\partial y} = 0 \quad (9)$$

in which t is time. Similar depth-integrations are performed to derive x and y shallow water momentum equations, as follows. The depth-integrated form of the Reynolds-averaged Navier-Stokes momentum equations may be expressed

$$\int_{-h_s}^{\zeta} \frac{\partial \bar{u}}{\partial t} dz + \int_{-h_s}^{\zeta} \frac{\partial \bar{u}^2}{\partial x} dz + \int_{-h_s}^{\zeta} \frac{\partial \bar{u}\bar{v}}{\partial y} dz + \int_{-h_s}^{\zeta} \frac{\partial \bar{u}\bar{w}}{\partial z} dz = \int_{-h_s}^{\zeta} f\bar{u} dz - \frac{1}{\rho} \int_{-h_s}^{\zeta} \frac{\partial \bar{p}}{\partial x} dz + \frac{1}{\rho} \int_{-h_s}^{\zeta} \frac{\partial \sigma'_{xx}}{\partial x} dz + \frac{1}{\rho} \int_{-h_s}^{\zeta} \frac{\partial \tau'_{yx}}{\partial y} dz + \frac{1}{\rho} \int_{-h_s}^{\zeta} \frac{\partial \tau'_{zx}}{\partial z} dz \quad (10a)$$

and

$$\int_{-h_s}^{\zeta} \frac{\partial \bar{v}}{\partial t} dz + \int_{-h_s}^{\zeta} \frac{\partial \bar{u}\bar{v}}{\partial x} dz + \int_{-h_s}^{\zeta} \frac{\partial \bar{v}^2}{\partial y} dz + \int_{-h_s}^{\zeta} \frac{\partial \bar{v}\bar{w}}{\partial z} dz = - \int_{-h_s}^{\zeta} f\bar{v} dz - \frac{1}{\rho} \int_{-h_s}^{\zeta} \frac{\partial \bar{p}}{\partial y} dz + \frac{1}{\rho} \int_{-h_s}^{\zeta} \frac{\partial \tau'_{xy}}{\partial x} dz + \frac{1}{\rho} \int_{-h_s}^{\zeta} \frac{\partial \sigma'_{yy}}{\partial y} dz + \frac{1}{\rho} \int_{-h_s}^{\zeta} \frac{\partial \tau'_{zy}}{\partial z} dz \quad (10b)$$

where f is the Coriolis coefficient, σ'_{xx} and σ'_{yy} are deviatoric stress components, and τ'_{yx} , τ'_{zx} , τ'_{xy} and τ'_{zy} are shear stress components, ρ is the density of water, and p is the pressure. Application of the Leibnitz rule and the kinematic bed and free surface boundary conditions gives (after some manipulation),

$$\begin{aligned} \frac{\partial(Uh)}{\partial t} + \frac{\partial(U^2h)}{\partial x} + \frac{\partial(UVh)}{\partial y} = fVh - \frac{1}{\rho} \int_{-h_s}^{\zeta} \frac{\partial \bar{p}}{\partial x} dz + \frac{\tau_{wx} - \tau_{bx}}{\rho} \\ + \frac{1}{\rho} \frac{\partial}{\partial x} \int_{-h_s}^{\zeta} \left(2\mu \frac{\partial \bar{u}}{\partial x} - \rho \bar{u}'\bar{u}' - \rho(\bar{u} - U)^2 \right) dz \\ + \frac{1}{\rho} \frac{\partial}{\partial y} \int_{-h_s}^{\zeta} \left(\mu \left(\frac{\partial \bar{u}}{\partial y} + \frac{\partial \bar{v}}{\partial x} \right) - \rho \bar{u}'\bar{v}' - \rho(\bar{u} - U)(\bar{v} - V) \right) dz \end{aligned} \quad (11a)$$

and

$$\begin{aligned} \frac{\partial(Vh)}{\partial t} + \frac{\partial(UVh)}{\partial x} + \frac{\partial(V^2h)}{\partial y} = -fUh - \frac{1}{\rho} \int_{-h_s}^{\zeta} \frac{\partial \bar{p}}{\partial y} dz + \frac{\tau_{wy} - \tau_{by}}{\rho} \\ + \frac{1}{\rho} \frac{\partial}{\partial x} \int_{-h_s}^{\zeta} \left(\mu \left(\frac{\partial \bar{u}}{\partial y} + \frac{\partial \bar{v}}{\partial x} \right) - \rho \bar{u}'\bar{v}' - \rho(\bar{u} - U)(\bar{v} - V) \right) dz \\ + \frac{1}{\rho} \frac{\partial}{\partial y} \int_{-h_s}^{\zeta} \left(2\mu \frac{\partial \bar{v}}{\partial y} - \rho \bar{v}'\bar{v}' - \rho(\bar{v} - V)^2 \right) dz \end{aligned} \quad (11b)$$

in which τ_{wx} , τ_{wy} are the surface (wind) stress components, and τ_{bx} , τ_{by} are bed stress components (which are usually evaluated using empirical friction formulae). The dispersive terms, $\frac{1}{\rho} \frac{\partial}{\partial x} \int_{-h_s}^{\zeta} (\rho(\bar{u} - U)^2) dz$,

$$\frac{1}{\rho} \frac{\partial}{\partial y} \int_{-h_s}^{\zeta} \rho(\bar{u} - U)(\bar{v} - V) dz, \quad \frac{1}{\rho} \frac{\partial}{\partial x} \int_{-h_s}^{\zeta} \rho(\bar{u} - U)(\bar{v} - V) dz \quad \text{and}$$

$$\frac{1}{\rho} \frac{\partial}{\partial y} \int_{-h_s}^{\zeta} (\rho(\bar{v} - V)^2) dz$$

represent horizontal momentum exchanges due to the depth-averaging process. Their effect is usually expressed by means of momentum correction factors, β_1 , β_2 and β_3 which can be calculated for a given boundary layer profile for \bar{u} and \bar{v} , and then subsumed into the corresponding advective acceleration term to give

$$\begin{aligned} \frac{\partial(Uh)}{\partial t} + \frac{\partial(\beta_1 U^2 h)}{\partial x} + \frac{\partial(\beta_2 UVh)}{\partial y} = fVh - \frac{1}{\rho} \int_{-h_s}^{\zeta} \frac{\partial \bar{p}}{\partial x} dz + \frac{\tau_{wx} - \tau_{bx}}{\rho} \\ + \frac{1}{\rho} \frac{\partial}{\partial x} \int_{-h_s}^{\zeta} \left(2\mu \frac{\partial \bar{u}}{\partial x} - \rho \bar{u}'\bar{u}' \right) dz + \frac{1}{\rho} \frac{\partial}{\partial y} \int_{-h_s}^{\zeta} \left(\mu \left(\frac{\partial \bar{u}}{\partial y} + \frac{\partial \bar{v}}{\partial x} \right) - \rho \bar{u}'\bar{v}' \right) dz \end{aligned} \quad (12a)$$

and

$$\begin{aligned} \frac{\partial(Vh)}{\partial t} + \frac{\partial(\beta_2 UVh)}{\partial x} + \frac{\partial(\beta_3 V^2 h)}{\partial y} = -fUh - \frac{1}{\rho} \int_{-h_s}^{\zeta} \frac{\partial \bar{p}}{\partial y} dz + \frac{\tau_{wy} - \tau_{by}}{\rho} \\ + \frac{1}{\rho} \frac{\partial}{\partial x} \int_{-h_s}^{\zeta} \left(\mu \left(\frac{\partial \bar{u}}{\partial y} + \frac{\partial \bar{v}}{\partial x} \right) - \rho \bar{u}'\bar{v}' \right) dz + \frac{1}{\rho} \frac{\partial}{\partial y} \int_{-h_s}^{\zeta} \left(2\mu \frac{\partial \bar{v}}{\partial y} - \rho \bar{v}'\bar{v}' \right) dz \end{aligned} \quad (12b)$$

where primes indicate fluctuating velocity

components. To simplify the analysis, effective stresses may be defined as

$$\begin{aligned} T_{xx} &= \frac{1}{h} \int_{-h_x}^{\zeta} \left(2\mu \frac{\partial \bar{u}}{\partial x} - \rho \overline{u'u'} \right) dz, \\ T_{xy} &= \frac{1}{h} \int_{-h_x}^{\zeta} \left(\mu \left(\frac{\partial \bar{u}}{\partial y} + \frac{\partial \bar{v}}{\partial x} \right) - \rho \overline{u'v'} \right) dz, \end{aligned} \quad (13)$$

and

$$T_{yy} = \frac{1}{h} \int_{-h_x}^{\zeta} \left(2\mu \frac{\partial \bar{v}}{\partial y} - \rho \overline{v'v'} \right) dz.$$

The effective stresses have two terms: the first relates to viscous stresses, the second to the turbulent Reynolds stresses. Replacing the Reynolds stresses by the Boussinesq approximation, the effective stresses become (noting that $\varepsilon \gg \nu$, and making an approximation for the depth-averaged eddy viscosity)

$$\begin{aligned} T_{xx} &= \frac{1}{h} \int_{-h_x}^{\zeta} \left(2\rho(\varepsilon + \nu) \frac{\partial \bar{u}}{\partial x} \right) dz = 2\rho\bar{\varepsilon} \frac{\partial U}{\partial x}, \\ T_{xy} &= \frac{1}{h} \int_{-h_x}^{\zeta} \rho(\varepsilon + \nu) \left(\frac{\partial \bar{u}}{\partial y} + \frac{\partial \bar{v}}{\partial x} \right) dz = \rho\bar{\varepsilon} \left(\frac{\partial U}{\partial y} + \frac{\partial V}{\partial x} \right), \end{aligned} \quad (14)$$

and

$$T_{yy} = \frac{1}{h} \int_{-h_x}^{\zeta} \left(2\rho(\varepsilon + \nu) \frac{\partial \bar{v}}{\partial y} \right) dz = 2\rho\bar{\varepsilon} \frac{\partial V}{\partial y}.$$

Substituting for the effective stresses, invoking the dynamic pressure boundary condition that the pressure at the free surface is atmospheric, and assuming a hydrostatic pressure distribution with depth, we obtain the shallow water momentum equations, as

$$\frac{\partial(Uh)}{\partial t} + \frac{\partial(\beta_1 U^2 h)}{\partial x} + \frac{\partial(\beta_2 UVh)}{\partial y} = fVh - gh \frac{\partial \zeta}{\partial x} + \frac{\tau_{wx} - \tau_{bx}}{\rho} + \frac{1}{\rho} \frac{\partial(hT_{xx})}{\partial x} + \frac{1}{\rho} \frac{\partial(hT_{xy})}{\partial y} \quad (15a)$$

and

$$\frac{\partial(Vh)}{\partial t} + \frac{\partial(\beta_2 UVh)}{\partial x} + \frac{\partial(\beta_3 V^2 h)}{\partial y} = -fUh - gh \frac{\partial \zeta}{\partial y} + \frac{\tau_{wy} - \tau_{by}}{\rho} + \frac{1}{\rho} \frac{\partial(hT_{xy})}{\partial x} + \frac{1}{\rho} \frac{\partial(hT_{yy})}{\partial y} \quad (15b)$$

where g is the acceleration due to gravity, τ_{wx} and τ_{wy} are the wind stress components in the x and y -directions, τ_{bx} and τ_{by} are the bed stress components in the x and y -directions.

The chain rule is used to transform the

shallow water equations (9), (15a), and (15b) from the Cartesian (x, y) system to the curvilinear (ξ, η) system, following Thomson *et al.* [6]. The basic transformation relations may be written:

$$f_x = \frac{\partial f}{\partial x} = \frac{\partial(f, y)}{\partial(\xi, \eta)} \div \frac{\partial(x, y)}{\partial(\xi, \eta)} = \frac{1}{J} (y_\eta f_\xi - f_\eta y_\xi), \quad (16a)$$

and

$$f_y = \frac{\partial f}{\partial y} = \frac{\partial(x, f)}{\partial(\xi, \eta)} \div \frac{\partial(x, y)}{\partial(\xi, \eta)} = \frac{1}{J} (x_\xi f_\eta - f_\xi x_\eta), \quad (16b)$$

where f is a differentiable function of x and y , J is the Jacobian, and subscript notation is used for differentiation. The transformed shallow water equations are then obtained^[9] as:

$$\frac{\partial \zeta}{\partial t} + \frac{1}{J} \left(y_\eta \frac{\partial(Uh)}{\partial \xi} - y_\xi \frac{\partial(Uh)}{\partial \eta} + x_\xi \frac{\partial(Vh)}{\partial \eta} - x_\eta \frac{\partial(Vh)}{\partial \xi} \right) = 0, \quad (17)$$

$$\begin{aligned} \frac{\partial(Uh)}{\partial t} + \frac{1}{J} \left(y_\eta \frac{\partial(\beta_1 U^2 h)}{\partial \xi} - y_\xi \frac{\partial(\beta_1 U^2 h)}{\partial \eta} + x_\xi \frac{\partial(\beta_2 UVh)}{\partial \eta} - x_\eta \frac{\partial(\beta_2 UVh)}{\partial \xi} \right) - fVh + \frac{gh}{J} \left(y_\eta \frac{\partial \zeta}{\partial \xi} - y_\xi \frac{\partial \zeta}{\partial \eta} \right) - \frac{\tau_{wx} - \tau_{bx}}{\rho} - \frac{1}{\rho J} \left(y_\eta \frac{\partial(hT_{xx})}{\partial \xi} - y_\xi \frac{\partial(hT_{xx})}{\partial \eta} + x_\xi \frac{\partial(hT_{xy})}{\partial \eta} - x_\eta \frac{\partial(hT_{xy})}{\partial \xi} \right) = 0, \end{aligned} \quad (18a)$$

and

$$\begin{aligned} \frac{\partial(Vh)}{\partial t} + \frac{1}{J} \left(y_\eta \frac{\partial(\beta_2 UVh)}{\partial \xi} - y_\xi \frac{\partial(\beta_2 UVh)}{\partial \eta} + x_\xi \frac{\partial(\beta_3 V^2 h)}{\partial \eta} - x_\eta \frac{\partial(\beta_3 V^2 h)}{\partial \xi} \right) + fUh + \frac{gh}{J} \left(x_\xi \frac{\partial \zeta}{\partial \eta} - x_\eta \frac{\partial \zeta}{\partial \xi} \right) - \frac{\tau_{wy} - \tau_{by}}{\rho} - \frac{1}{\rho J} \left(y_\eta \frac{\partial(hT_{xy})}{\partial \xi} - y_\xi \frac{\partial(hT_{xy})}{\partial \eta} + x_\xi \frac{\partial(hT_{yy})}{\partial \eta} - x_\eta \frac{\partial(hT_{yy})}{\partial \xi} \right) = 0. \end{aligned} \quad (18b)$$

where

$$T_{xx} = \frac{2\rho\bar{\varepsilon}}{J} \left(y_\eta \frac{\partial U}{\partial \xi} - y_\xi \frac{\partial U}{\partial \eta} \right),$$

$$T_{xy} = \frac{\rho\bar{\varepsilon}}{J} \left(x_\xi \frac{\partial U}{\partial \eta} - x_\eta \frac{\partial U}{\partial \xi} + y_\eta \frac{\partial V}{\partial \xi} - y_\xi \frac{\partial V}{\partial \eta} \right), \quad (19)$$

and

$$T_{yy} = \frac{2\rho\bar{\varepsilon}}{J} \left(x_\xi \frac{\partial V}{\partial \eta} - x_\eta \frac{\partial V}{\partial \xi} \right).$$

The transformed shallow water equations are solved on a boundary-fitted grid, whose lines are defined such that $\xi = i\Delta\xi$ and $\eta = j\Delta\eta$, where $i = 1, 2, \dots, i_{\max}$ and $j = 1, 2, \dots, j_{\max}$, $\Delta\xi$ and $\Delta\eta$ are grid intervals in the ξ - and η -directions, and time $t = k\Delta t$. The transformed shallow water equations (17), (18a) and (18b) are discretized using second-order finite

differences in space and a fourth-order Runge-Kutta scheme in time. The discretized version of the transformed equations may be summarized as follows:

$$\frac{\partial \zeta^k}{\partial t} \Big|_{i,j} = -\frac{1}{J} \left(y_{\eta} \Big|_{i,j}^k \frac{\partial(Uh)}{\partial \xi} \Big|_{i,j}^k - y_{\xi} \Big|_{i,j}^k \frac{\partial(Uh)}{\partial \eta} \Big|_{i,j}^k + x_{\xi} \Big|_{i,j}^k \frac{\partial(Vh)}{\partial \eta} \Big|_{i,j}^k - x_{\eta} \Big|_{i,j}^k \frac{\partial(Vh)}{\partial \xi} \Big|_{i,j}^k \right), \quad (20)$$

$$\begin{aligned} \frac{\partial(Uh)}{\partial t} \Big|_{i,j}^k = & -\frac{1}{J} \left(y_{\eta} \Big|_{i,j}^k \frac{\partial(\beta_1 U^2 h)}{\partial \xi} \Big|_{i,j}^k - y_{\xi} \Big|_{i,j}^k \frac{\partial(\beta_1 U^2 h)}{\partial \eta} \Big|_{i,j}^k + x_{\xi} \Big|_{i,j}^k \frac{\partial(\beta_2 UVh)}{\partial \eta} \Big|_{i,j}^k - x_{\eta} \Big|_{i,j}^k \frac{\partial(\beta_2 UVh)}{\partial \xi} \Big|_{i,j}^k \right) + fU_{i,j}^k - \\ & - \frac{gh}{J} \left(y_{\eta} \Big|_{i,j}^k \frac{\partial \zeta^k}{\partial \xi} \Big|_{i,j}^k - y_{\xi} \Big|_{i,j}^k \frac{\partial \zeta^k}{\partial \eta} \Big|_{i,j}^k \right) + \frac{\tau_{wx} - \tau_{bx}}{\rho} + \frac{1}{\rho J} \left(y_{\eta} \Big|_{i,j}^k \frac{\partial(hT_{xx})}{\partial \xi} \Big|_{i,j}^k - y_{\xi} \Big|_{i,j}^k \frac{\partial(hT_{xx})}{\partial \eta} \Big|_{i,j}^k \right) + \\ & + \frac{1}{\rho J} \left(x_{\xi} \Big|_{i,j}^k \frac{\partial(hT_{xy})}{\partial \eta} \Big|_{i,j}^k - x_{\eta} \Big|_{i,j}^k \frac{\partial(hT_{xy})}{\partial \xi} \Big|_{i,j}^k \right), \quad (21a) \end{aligned}$$

and

$$\begin{aligned} \frac{\partial(Vh)}{\partial t} \Big|_{i,j}^k = & -\frac{1}{J} \left(y_{\eta} \Big|_{i,j}^k \frac{\partial(\beta_2 UVh)}{\partial \xi} \Big|_{i,j}^k - y_{\xi} \Big|_{i,j}^k \frac{\partial(\beta_2 UVh)}{\partial \eta} \Big|_{i,j}^k + x_{\xi} \Big|_{i,j}^k \frac{\partial(\beta_3 V^2 h)}{\partial \eta} \Big|_{i,j}^k - x_{\eta} \Big|_{i,j}^k \frac{\partial(\beta_3 V^2 h)}{\partial \xi} \Big|_{i,j}^k \right) - fV_{i,j}^k - \\ & - \frac{gh}{J} \left(x_{\xi} \Big|_{i,j}^k \frac{\partial \zeta^k}{\partial \eta} \Big|_{i,j}^k - x_{\eta} \Big|_{i,j}^k \frac{\partial \zeta^k}{\partial \xi} \Big|_{i,j}^k \right) + \frac{\tau_{wy} - \tau_{by}}{\rho} + \frac{1}{\rho J} \left(y_{\eta} \Big|_{i,j}^k \frac{\partial(hT_{xy})}{\partial \xi} \Big|_{i,j}^k - y_{\xi} \Big|_{i,j}^k \frac{\partial(hT_{xy})}{\partial \eta} \Big|_{i,j}^k \right) + \\ & + \frac{1}{\rho J} \left(x_{\xi} \Big|_{i,j}^k \frac{\partial(hT_{yy})}{\partial \eta} \Big|_{i,j}^k - x_{\eta} \Big|_{i,j}^k \frac{\partial(hT_{yy})}{\partial \xi} \Big|_{i,j}^k \right). \quad (21b) \end{aligned}$$

With a suitable initial flow field and appropriate boundary conditions (slip conditions for walls, and prescribed (Dirichlet) or transmissive (van Neumann) conditions at open boundaries, the numerical model marches forward in time evaluating the finite difference form of the right hand side of equations (20), (21a), and (21b). The fourth-order Runge-Kutta scheme is used to carry out the time integration implied by the right hand side of the equations.

3. Lagrangian particle tracking

The Lagrangian particle-tracking scheme simply involves numerical integration in time of the following advection equations

$$u_p = \frac{dx_p}{dt}, v_p = \frac{dy_p}{dt} \quad (22)$$

where (u_p, v_p) are the Cartesian components of velocity of a particle located at (x_p, y_p) . In the present work, it is assumed that each particle is a passive tracer that moves with exactly the same velocity as the underlying flow. Bilinear interpolation, described in detail in the companion paper^[11], is used to evaluate velocity components in continuous space from the discrete, grid-based velocity components predicted by the shallow flow solver. Equation (22) is integrated forward in time using a fourth-order Runge-Kutta scheme, also outlined in the companion paper^[11].

The scheme has already been validated for the chaotic advection caused by a pair of blinking vortices^[11], with close agreement obtained against analytical solutions evaluated by Aref^[12].

The Lyapunov exponent may be evaluated as a measure of mixing, after computing the mean particle separation distance of an initial array of particles as it evolves in time. In the present work, particles that have north and south adjacent particles are first selected. Then the mean particle separation is estimated, and plotted against time.

4. Results

4.1 Particle mixing in a rectangular channel containing a pair of parallel groynes

The coupled shallow water and particle-tracking model was used in the companion paper^[11] to simulate particle advection in a rectangular open channel of length 3600 m, width 300 m, and mean depth 1 m, which contains a pair of groynes. At the inlet open boundary, the velocity is set to 0.5 m/s. The eddy viscosity coefficient is 0.5 m²/s throughout the domain. The computational grid is 360 (stream-wise) by 30 (transverse), the time step is 5 s, and the total flow simulation time is 4000 s. Here, we extend the results to examine mixing processes by quantifying the degree of particle spreading with time. Fig.1 shows the mean particle separation distance as a function of time obtained for 54,000 particles that are initially uniformly spaced throughout the domain in red, blue, magenta, green, and yellow bands of equal width spanning the channel from south to north (for more information, see Fig. 9a of the companion paper^[11]). It is clear that the purple and green layers achieve the highest rates of dispersion. This is because they coincide with the wavy shear layer that is produced at the tips of the groynes, where the flow separates, and the mean flow drives recirculating zones in the lee of each groyne.

4.2 Shallow flow model of idealised Danube River bends

The capability of the curvilinear shallow flow model to produce sensible flow hydrodynamics around an idealized bend was verified by considering idealized cases of shallow flow around 90° and 180° bends of inner radius $r_0 = 1000$ m and outer radius $r_1 = 1500$ m, with inlet and outlet stems both of which are 2000 m long and 500 m wide. The water depth is 3 m, water density is 1000 kg/m³, eddy viscosity is 9.3 m²/s and there is no wind stress present. Fig. 2 shows the physical domains and the corresponding 100 x 100 grid used in both cases. The time step is 5 s, and the total simulation time is 5000 s. Steady-state is achieved by $t \sim 2500$ s. An analytical solution exists for streamlined flow around a circular bend.

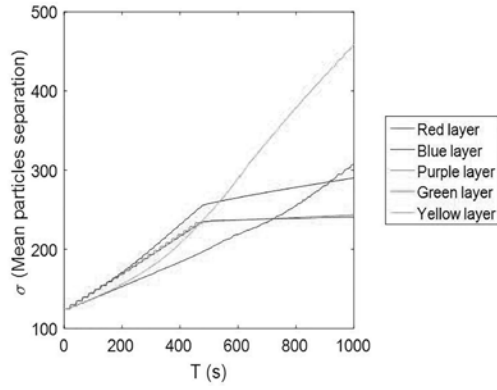


Fig.1 Mean particle separation distance as a function of time for a rectangular channel containing two groynes and initially filled with particles that are uniformly distributed in coloured bands.

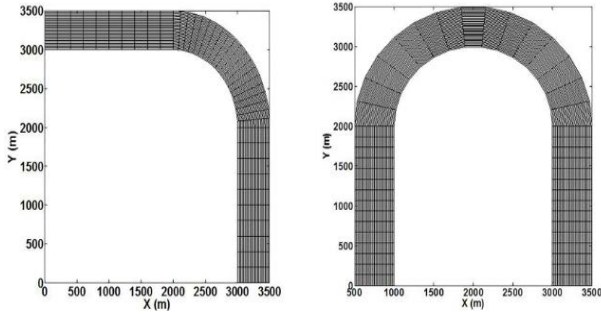


Fig.2 Computational domains comprising 100 x 100 cell boundary fitted grids for 90° and 180° circular bends in open channels with inlet and outlet stems

Along the circular bend, the radial and tangential velocity components, u_r and u_θ , are related to their Cartesian counterparts, u and v , by.

$$u_r = u \cos_\theta + v \sin_\theta \quad (24a)$$

$$u_\theta = v \cos_\theta - u \sin_\theta \quad (24b)$$

where θ is the polar angle. In the case of flow around a circular bend, a parabolic velocity distribution across the channel is obtained analytically, corresponding to fully developed flow in a channel^[13] such that:

$$u_\theta = \frac{3}{2}u_I \left(1 - \left(\frac{2r'}{b} \right)^2 \right), \quad u_r = 0 \quad (25)$$

where u_I is the mean flow speed at the inlet and r' is the distance measured radially from the midpoint of the channel. Fig. 3 presents numerical predictions and analytical solutions of the steady-state velocity vectors and velocity magnitude contours for fully developed shallow flow around a 90° bend, with inlet and outlet stems. Fig. 4 shows the corresponding results

obtained for the 180° bend. In both cases, the model predictions and analytical solutions are in reasonable agreement.

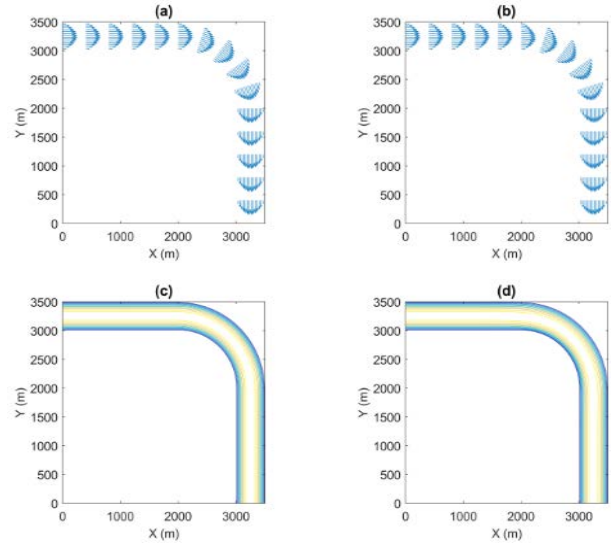


Fig.3 Shallow flow around 90° bend, with inlet and outlet stems: (a) predicted and (b) analytical steady-state velocity vectors; (c) predicted and (d) analytical velocity magnitude contours.

4.3 Particle mixing in a groyned open channel bend

The coupled curvilinear shallow flow and particle-tracking model is next used to study tracer advection in an open channel comprising a 90° bend with inlet and outlet stems. The bend has interior radius of 3300 m and an exterior radius of 3600 m. Both stems are 3600 m long and 300 m wide. The inlet flow velocity is set at 0.5 m/s, the downstream water depth to 1 m, and the eddy viscosity is 0.5 m²/s.

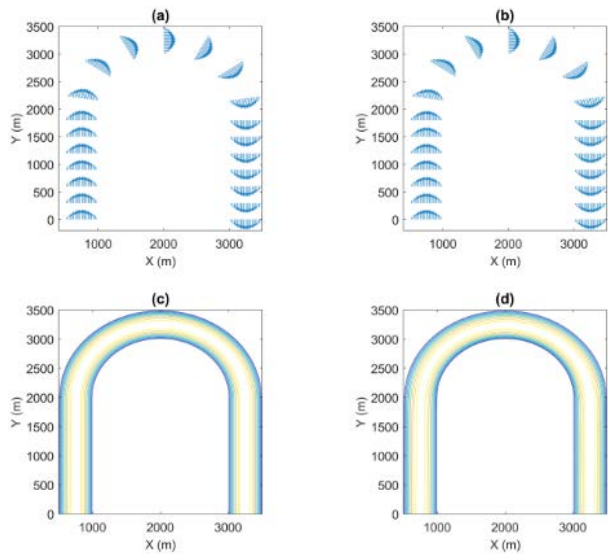


Fig.4 Shallow flow around 180° bend, with inlet and outlet stems: (a) predicted and (b) analytical steady-state velocity vectors; (c) predicted and (d) analytical velocity magnitude contours.

The combined grid consists of a rectangular portion of 360 x 30 grid points covering the inlet stem, a 472 x 30 boundary-fitted grid for the circular bend, and a further 360 x 30 grid for the outlet stem. Stable results are achieved using a time step of 5 s, and steady state is reached well before the simulation ends at 5000 s. Two cases are considered involving a pair of groynes projecting out from the channel wall into the mainstream: one where the groynes are located in series along the inner boundary; the other where the groynes are staggered with the upstream groyne projecting from the inner wall, and the other with the groyne projecting from the outer wall.

Fig.5 shows the steady state velocity vectors in a portion of the river bend for the first case where the two groynes are located in series. Recirculation zones occur in the lee of each groyne. From the Lagrangian particle-tracking model, it is possible to observe the effect of these recirculation zones on the trajectories taken by tracer particles. Fig.6 shows the dispersive transport of three bands of coloured tracers introduced immediately upstream of the first groyne, at 1000 s intervals after the initial release until 5000 s is reached. The green particles are advected rapidly by the through-flow beyond the ends of the groynes, whereas the blue particles are pulled towards the inner wall under the unfluence of the recirculation zone. The red particles creep across the first groyne and some become trapped within the recirculation zone. Fig.7 shows that similar results are obtained when the colour bands of tracer particles are introduced between the first and second parallel groynes. Here particles accumulate in the recirculation zone and particles are trapped by gyres downstream of the first groyne. Figs 8, 9 and 10 present the corresponding results obtained for the second case, when the groynes are arranged in a staggered configuration. Fig.8 shows the steady state velocity vectors. Flow

separation occurs at end of each groyne, creating recirculation zones that serve to trap particles. Figs 9 and 10 provide further visualizations of the tracer particle distributions when introduced as coloured arrays arranged in bands that are initially in front of the first groyne (Fig. 9) and between the two groynes (Fig. 10). Results are presented at intervals of 500 s after the initial release until 2500 s. In the case of alternate groynes, the tracer particles are not trapped for as long as for the case of parallel groynes, and tend to be washed downstream except for those closest to a lateral wall.

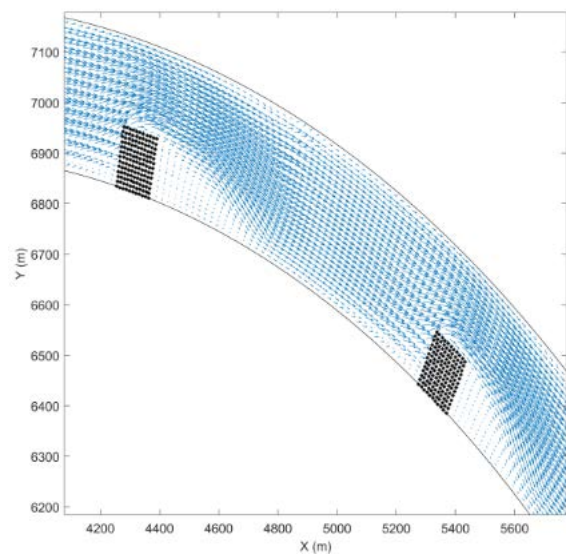


Fig.5 Predicted steady state velocity vectors in an open channel bend with two parallel groynes projecting from the inner boundary wall.

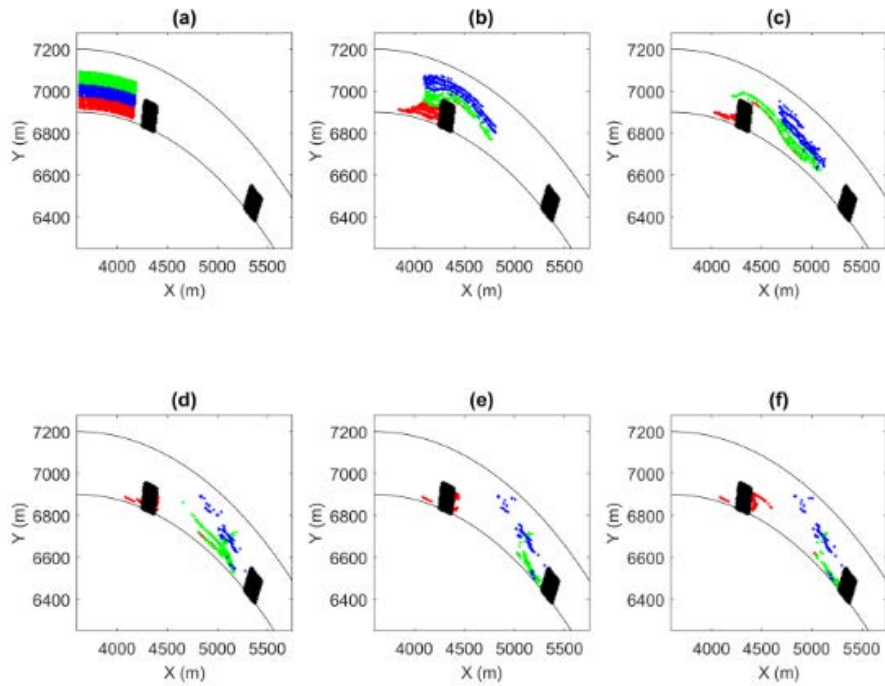


Fig. 6 Particle advection in an open channel bend with two parallel groynes, particles introduced immediately upstream of the first groyne at times: (a) $t = 0$ s, (b) $t = 1000$ s, (c) $t = 2000$ s, (d) $t = 3000$ s, (e) $t = 4000$ s, and (f) $t = 5000$ s.

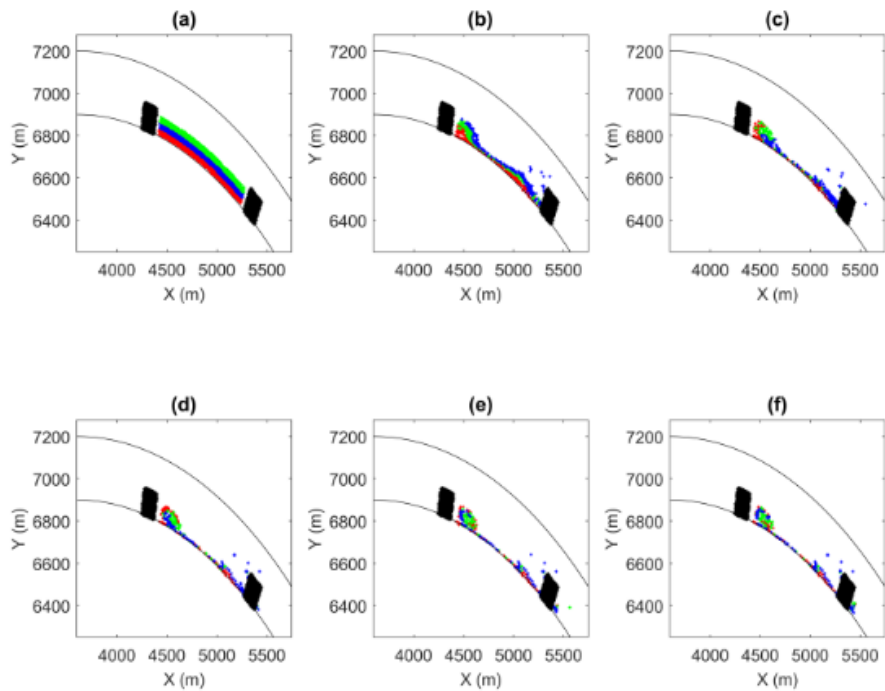


Fig.7 Particle advection in an open channel bend with two parallel groynes, particles introduced between the first and second parallel groynes at times: (a) $t = 0$ s, (b) $t = 1000$ s, (c) $t = 2000$ s, (d) $t = 3000$ s, (e) $t = 4000$ s, and (f) $t = 5000$ s.

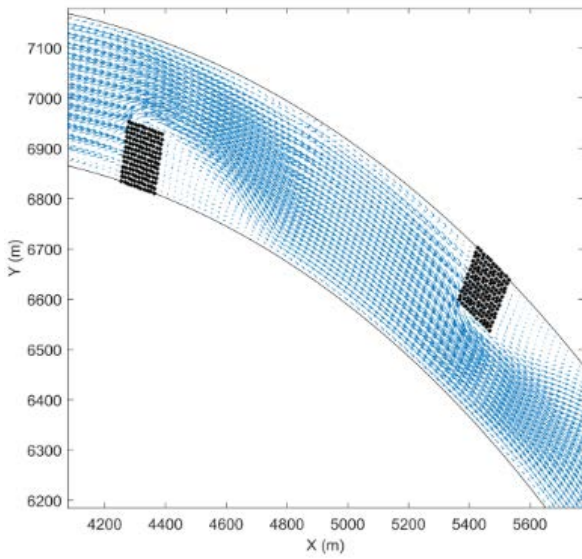


Fig.8 Predicted steady state velocity vectors in an open bend with two groynes projecting alternately from the inner and outer walls of the bend.

5. Conclusions

A primary reason for providing flood protection systems along rivers is to reduce flow speed and dissipate energy in the main channel through flow control devices. This paper has considered shallow flow in an idealised, curved open channel geometry representative of a Danube River bend. A coupled numerical model based on a boundary-fitted, curvilinear shallow flow solver and Lagrangian particle-tracking scheme predicted the shallow flow hydrodynamics in a curved open channel, and evaluated mixing of tracer particles. The model was applied to mixing in a rectangular channel containing two groynes in series oriented perpendicular to a lateral wall, showing that particles in the through-flow beyond the ends of the groynes mix less than those caught up in the shear layers and recirculation zones produced by the groynes. Close agreement was obtained between numerical and analytical predictions of the steady state velocity profiles produced by fully developed flow in a large bend, in the absence of groynes.

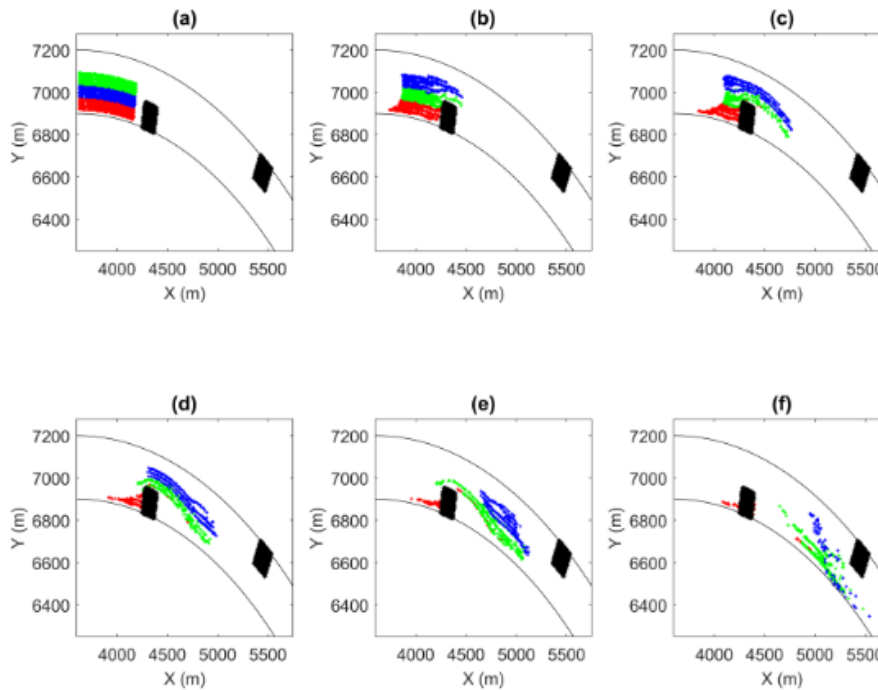


Fig.9 Particle advection in an open channel bend containing two alternate groynes, particles introduced immediately upstream of the first groyne at times: (a) $t = 0$ s, (b) $t = 500$ s, (c) $t = 1000$ s, (d) $t = 1500$ s, (e) $t = 2000$ s, and (f) $t = 2500$ s

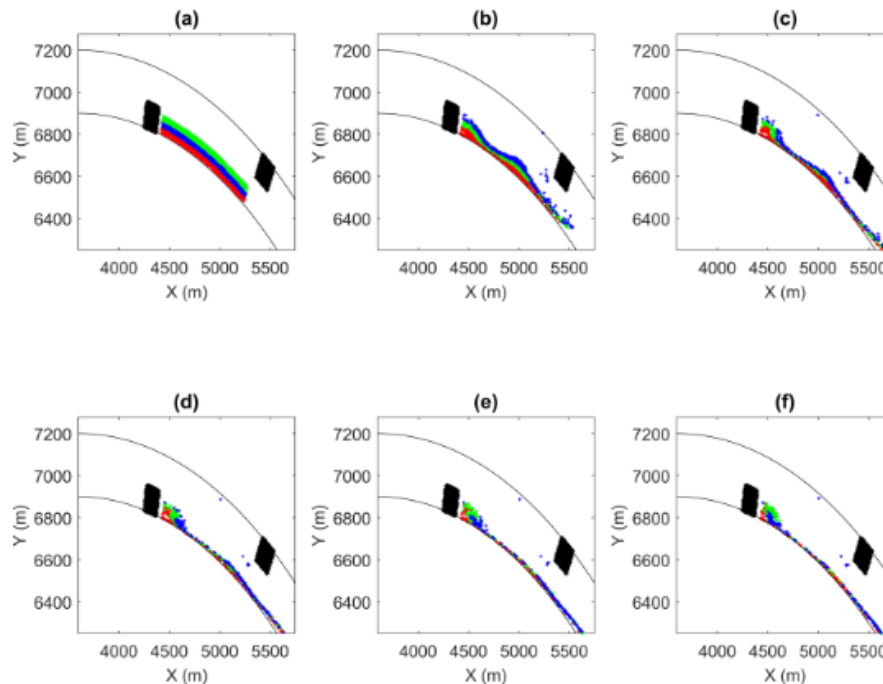


Fig.10 Particle advection in an open channel bend containing two alternate groynes, particles introduced between the first and second parallel groynes at times: (a) $t = 0$ s, (b) $t = 500$ s, (c) $t = 1000$ s, (d) $t = 1500$ s, (e) $t = 2000$ s, and (f) $t = 2500$ s

The coupled model was then applied to two cases of groynes in series and staggered configurations along an open channel bend. Use of bands of coloured particles highlighted the trapping effect of recirculation zones immediately behind the groynes.

Acknowledgements

The first author is grateful to the University of Edinburgh, which partly funded this research.

References

- [1] Weitbrecht, V., Socolofsky, S. A., Jirka, G. H. Experiments on mass exchange between groin fields and main stream in rivers [J]. *Journal of Hydraulic Engineering*. 2008, 134 (2): 772-783.
- [2] Zsugyel, M., Tél, T., Józsa, J. Numerical investigation of chaotic advection past a groyne based on laboratory flow experiment [J]. *Advances in Water Resources*, 2014, 71: 81–92.
- [3] Weitbrecht, V, Uijtewaal, W. S. J., Jirka, G. H. 2-D Particle tracking to determine transport characteristics in rivers with dead zones [C]. *Int. Symp. on Shallow Flows*, Delft, 2003, 1-8.
- [4] Rutherford, J. C. Handbook on mixing in rivers [R], Water & Soil Miscellaneous Publication No. 26, 1981, National Water & Soil Conservation Organisation, New Zealand, 60 p., ISSN 0110-4705.
- [5] Thompson J.F., Soni B.K., Weatherill N.P. (Eds.) *Handbook of Grid Generation* [M]. CRC Press,

London, 1999.

- [6] Thompson, J. F, Thames, F. C, Martin, C. W. Automatic numerical generation of body fitted curvilinear coordinate systems on fields containing any number of arbitrary two dimensional bodies [J]. *Computational Physics*, 1974, 15: 299–319.
- [7] Johnson, B.H. Numerical modelling of estuarine hydrodynamics on a boundary-fitted coordinate system, In J.F. Thompson (ed.) *Numerical Grid Generation* [M]. 1982, 409-436.
- [8] Johnson, B. H, Stein, A. B., Thompson, J. F. Modelling of flow and conservative substance transport on a boundary-fitted coordinate system [C]. *Proc. IAHR Symp. on Refined Modelling of Flows*, Paris, France. 1982, 2:509-518.
- [9] Borthwick, A. G. L., Barber, R. W. River and reservoir flow modelling using the transformed shallow water equations [J]. *International Journal for Numerical Methods in Fluids*, 1992, 14: 1193–1217.
- [10] Jalali, M.M. Curvilinear Shallow Flow and Particle tracking model for a groyned river bend [D]. PhD Thesis, The University of Edinburgh, UK, 2016, 184 p.
- [11] Jalali, M.M., Borthwick A.G.L. Chaotic advection of particles in a pair of adjacent side-wall cavities and in a rectangular channel containing a pair of parallel groynes [J]. *Journal of Hydrodynamics*, 2018, In press.
- [12] Aref, H. Stirring by chaotic advection [J]. *Journal of Fluid Mechanics*, 1984, 143: 1–21.
- [13] Schlichting, H., Gersten, K. *Boundary-Layer Theory* [M]. 8th edition, Springer-Verlag, Berlin Heidelberg, 2000, 795 p.