



PEARL

The impact of myosteatosi s on outcomes following surgery for gastrointestinal malignancy: a meta-analysis

MacCormick, A; Streeter, A; Puckett, M; Aroori, S

Published in:

The Annals of The Royal College of Surgeons of England

DOI:

[10.1308/rcsann.2021.0290](https://doi.org/10.1308/rcsann.2021.0290)

Publication date:

2023

Link:

[Link to publication in PEARL](#)

Citation for published version (APA):

MacCormick, A., Streeter, A., Puckett, M., & Aroori, S. (2023). The impact of myosteatosi s on outcomes following surgery for gastrointestinal malignancy: a meta-analysis. *The Annals of The Royal College of Surgeons of England*, 105(3), 203-211.
<https://doi.org/10.1308/rcsann.2021.0290>

All content in PEARL is protected by copyright law. Author manuscripts are made available in accordance with publisher policies. Wherever possible please cite the published version using the details provided on the item record or document. In the absence of an open licence (e.g. Creative Commons), permissions for further reuse of content should be sought from the publisher or author.



The impact of myosteatosi s on outcomes following surgery for gastrointestinal malignancy: a meta-analysis

A McCormick¹, A Streeter^{2,3}, M Puckett¹, S Aroori¹

¹University Hospitals Plymouth NHS Trust, UK

²Institute for Epidemiology and Social Medicine, University of Münster, Germany

³University of Plymouth, UK

ABSTRACT

Introduction The aim of this review was to evaluate the impact of preoperative myosteatosi s on long-term outcomes following surgery for gastrointestinal malignancy.

Methods We conducted a systematic search of the electronic information sources, including PubMed MEDLINE, Embase, Cochrane Central Register of Controlled Trials (CENTRAL), CINAHL and AMED. Studies were included if they reported the impact of preoperatively defined myosteatosi s, or a similar term, on long-term survival outcomes following surgery for gastrointestinal malignancy. A subgroup analysis was performed for those studies reporting outcomes for colorectal cancer patients only.

Findings Thirty-nine full-text articles were reviewed for inclusion, with 19 being retained after the inclusion criteria were applied. The total number of included patients across all studies was 14,481. Patients with myosteatosi s had significantly poorer overall survival, according to univariate (hazard ratio (HR) 1.82, 95% confidence interval (CI) 1.67–1.99) and multivariable (HR 1.66, 95% CI 1.49–1.86) analysis. This was also demonstrated for cancer-specific survival (univariate HR 1.62, 95% CI 1.18–2.22; multivariable HR 1.73, 95% CI 1.48–2.03) and recurrence-free survival (univariate HR 1.28, 95% CI 1.10–1.48; multivariable HR 1.38, 95% CI 1.07–1.77).

Conclusions This meta-analysis demonstrates that patients with preoperative myosteatosi s have poorer long-term survival outcomes following surgery for gastrointestinal malignancy. Therefore, myosteatosi s should be used for preoperative optimisation and as a prognostic tool before surgery. More standardised definitions of myosteatosi s and further cohort studies of patients with non-colorectal malignancies are required.

KEYWORDS

Myosteatosi s – Malignancy – Survival – Meta-analysis

Accepted 4 October 2021

CORRESPONDENCE TO

Somaiah Aroori, E: s.aroori@nhs.net

Introduction

In the age of personalised medicine, it remains essential that preoperative risk assessment is as detailed as possible.¹ A fundamental aspect of this is the assessment of nutritional status, which can be facilitated by body composition analysis.² Myosteatosi s, the deposition of intramuscular fat, is an early change that occurs before the onset of functional decline and the development of metabolic alterations such as obesity and diabetes.³ The muscle appears with a low radiation attenuation which reflects the deposition of fat within myocytes.⁴ This has been shown to occur with or without excess extracellular deposition of adipocytes.⁴ Thus, myosteatosi s has subsequently been shown to decrease muscle quality and functional status significantly.⁵

Since the 1990s, enhanced recovery after surgery programmes have become an essential focus of perioperative management.⁶ A key element of an enhanced recovery after surgery programme is a focus on the optimisation of preoperative nutrition; however,

this has remained a challenge.⁷ The ability to accurately and reliably identify patients with myosteatosi s and other poor nutritional states, who would be defined as being of a less than adequate nutritional state, would allow for more accurate optimisation of preoperative and postoperative nutrition.⁸

Body composition parameters such as sarcopenia have been extensively demonstrated to significantly increase the risk of immediate postoperative complications and decrease overall survival (OS).^{9–13} In recent literature, myosteatosi s has been shown to result in lower long-term outcomes for all cancer patients¹⁴ and specifically colorectal cancer patients,¹⁵ regardless of management options or cancer stage. All patients now have cross-sectional imaging, usually in the form of a computed tomography (CT) scan, prior to any operative interventions for gastrointestinal malignancy for staging and planning purposes.¹⁶ Therefore, myosteatosi s may be assessed using these cross-sectional views and can then be analysed for an association with outcomes.

This review aims to assess the impact of myosteatosi s on long-term outcomes for those patients undergoing surgery with curative intent for a gastrointestinal malignancy.

Methods

Literature search strategy

In accordance with the Preferred Reporting Items for Systematic Review and Meta-Analyses (PRISMA) guidelines, a systematic review of all published research on myosteatosi s was performed. Using both Medical Subject Heading (MeSH) terms and free-text terms, the databases PubMed MEDLINE, Embase, Cochrane Central Register of Controlled Trials (CENTRAL), CINAHL and AMED were searched for relevant articles on 17 June 2020. A review of the reference lists of all relevant studies lists was performed to identify any articles missed by the search terms. Our methodology respected the standards of PRISMA statement. The flow chart for the literature search process is shown in [Figure 1](#).

Study selection

Three reviewers carefully assessed the title and abstract of articles found as a result of the literature search. Following initial screening, full-text articles were reviewed to confirm eligibility. Discrepancies in this process were resolved by discussion between the authors. Several inclusion criteria were used to assess eligibility. To be included, a study had to have analysed myosteatosi s, or an equivalent term, using CT imaging and should have included patients with a malignancy of the gastrointestinal system, undergoing surgery with curative intent. Studies with any definition of myosteatosi s were included because of the previous lack of a well-defined definition and variation based on populations.

Outcomes

We planned to evaluate the effect of myosteatosi s on OS, cancer-specific survival (CSS) or recurrence-free survival (RFS). Studies only analysing the short-term outcomes after surgery were excluded.

Definition of myosteatosi s

Definitions of myosteatosi s used in the individual studies are given in [Table 2](#). Many studies used the recently defined definition of <41 Hounsfield Units (HU) if body mass index (BMI) <25 and <33 HU if BMI >25. All the included studies assessed myosteatosi s by measuring a single CT slice at the third lumbar vertebra (L3). Two of the included studies used intramuscular adipose tissue content, calculated using the same lumbar vertebra but comparing it with the mean HU values of subcutaneous fat. These intramuscular adipose tissue content values are then used to define myosteatosi s by using sex-specific median cut-offs. Studies that did not precisely imply myosteatosi s, but instead used 'low muscle density/attenuation' were also included.

Statistical analysis

Hazard ratios (HRs) from studies eligible for meta-analysis were pooled using the generic inverse variance method, applied separately to OS, CSS and progression-free survival. Heterogeneity between studies was estimated through the chi-square test of Cochrane's Q and the I^2 statistic interpretation. Both fixed and random-effects methods were used in the meta-analysis, with the between-study variance estimated using the Dersimonian and Laird method. Analysis was conducted using the *meta package's metagen function* in R (R Core Team, 2020).¹⁷ Subgroup analysis was performed for those studies reporting outcomes for colorectal cancer patients only.

Assessment of risk of bias

The Newcastle–Ottawa scale was used to assess the quality of the included research studies. This method analyses the selection of patient methods, study group comparability and the outcome assessment. A flow chart sheet ([Table 1](#)) entitled 'Newcastle–Ottawa Quality Assessment Form for Cohort Studies' was followed, and the overall rating was assigned accordingly.

Findings

The full texts of 39 articles were reviewed, of which 19^{18–36} were included in this meta-analysis (as shown in [Figure 1](#)). The characteristics of the included studies are given in [Table 2](#). The total number of patients included in the analysis was 14,481 (colorectal cancer, 10,890; hepatocellular cancer, 1,863; gastric cancer, 973; cholangiocarcinoma, 459; periampullary cancer, 166; oesophageal cancer, 150).

Overall survival for all cancers

Both on univariate (HR 1.82, 95% CI 1.67–1.99; 14 studies) and multivariable (random-effects model: HR 1.66, 95% CI 1.49–1.86; 14 studies) analysis, patients classified as having myosteatosi s had significantly worse OS than patients who did not have myosteatosi s ([Figure 2a](#)).

Cancer-specific survival for all cancers

Fewer studies contributed CSS rates compared with OS rates. These were all from studies on colorectal cancer (although not all colorectal cancer studies presented CSS results). No significant heterogeneity was detected between the studies. Both on univariate (HR 1.62, 95% CI 1.18–2.22; four studies) and multivariable analysis (HR 1.73, 95% CI 1.48–2.03; six studies), patients with myosteatosi s had worse CSS compared with patients that did not have myosteatosi s ([Figure 2b](#)).

Recurrence-free survival for all cancers

Patients classified as having myosteatosi s had a significantly worse RFS compared with patients who did not have myosteatosi s (HR 1.28, 95% CI 1.10–1.48; seven studies). Four studies contributed to the multivariable analysis of RFS. The I^2 statistic indicated moderate heterogeneity, although this was not statistically

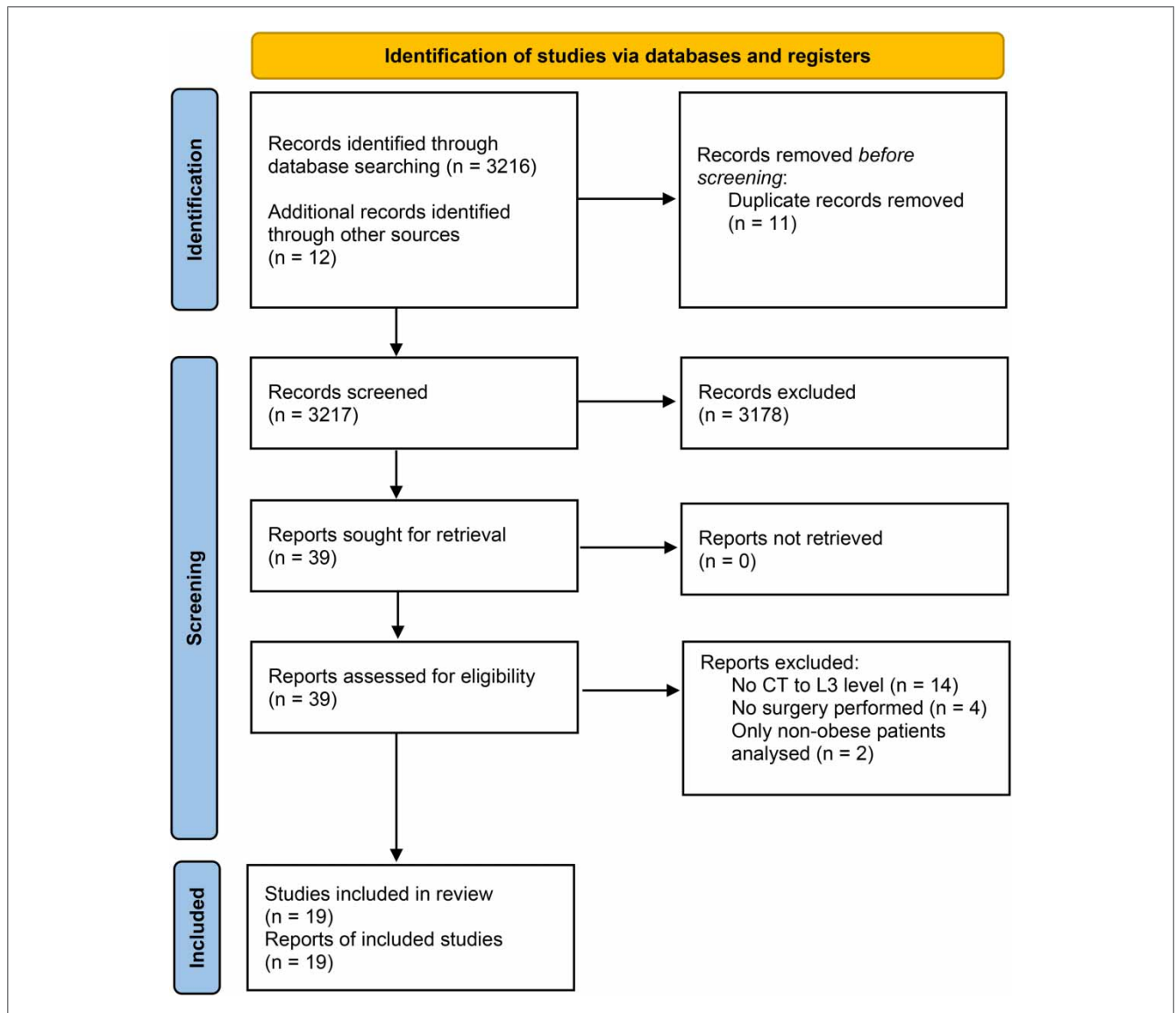


Figure 1 Study flow diagram

significant in the chi-square test of Cochrane’s Q statistic. Although the confidence intervals for the fixed and random-effects estimates overlapped, taking account of heterogeneity, the random-effects estimate indicated that patients with myosteatosi s had a significantly worse RFS compared with those without (HR 1.45, 95% CI 1.15–1.77; four studies) (Figure 2c).

Subgroup meta-analysis of studies reporting results for colorectal cancer patients

Among the subset of studies reporting results for colorectal cancer patients, heterogeneity was low according to the I² statistics, with little change in the estimated HRs for the meta-analysis of both univariate

and multivariable-adjusted (Figure 3a) results. Because cancer-specific outcomes were reported by only a subset of studies of colorectal cancer, the meta-analysis of cancer-specific outcomes was applicable only to this group of patients (Figure 3b), and so there was no change in heterogeneity or the estimates. As measured by I², heterogeneity among the univariate estimates for RFS (Figure 3c) decreased slightly from 32% for all cancer types to 26% for just colorectal cancers. The point estimate for overall effect of myosteatosi s was now lower, with a HR of 1.17 (95% CI 0.91–1.51) and non-significant at the 5% level, compared with all cancers. By restricting the meta-analysis to colorectal cancers, one study was lost from the meta-analysis of multivariable analyses of

Table 1 Newcastle–Ottawa scale or the assessment of cohort studies

Author	Representativeness of the exposed cohort	Selection bias assessment		Demonstration that outcome of interest was not present at the start of study	Comparability of cohorts based on design or analysis	Assessment of the outcome	Outcome		Result
		Selection of the non-exposed cohort	Ascertainment of exposure				Was follow-up long enough for outcomes to occur	Adequacy of follow up of cohorts	
Hopkins <i>et al</i> , 2019 ¹⁸	•	•	•		•	•	•	•	Good
Malietzis <i>et al</i> , 2015 ¹⁹	•	•	•		•	•		•	Good
Martin <i>et al</i> , 2018 ²⁰	•	•	•		•	•	•	•	Good
Zhuang <i>et al</i> , 2019 ²¹	•	•	•		•	•		•	Good
Dolan <i>et al</i> , 2018 ²²	•	•	•			•	•	•	Fair
Van Vugt <i>et al</i> , 2019 ²³	•	•	•		•	•	•	•	Good
Sueda <i>et al</i> , 2018 ²⁴	•	•	•		•	•	•	•	Good
McSorley <i>et al</i> , 2018 ²⁵	•	•	•		•	•	•	•	Good
Van Vugt <i>et al</i> , 2018 ²⁶	•	•	•		•	•		•	Good
Van Baar <i>et al</i> , 2018 ²⁷	•	•	•		•	•	•	•	Good
Tamandl <i>et al</i> , 2016 ²⁸	•	•	•			•	•	•	Fair
Chakedis <i>et al</i> , 2018 ²⁹	•	•	•		•	•		•	Good
Van Rijssen <i>et al</i> , 2017 ³⁰	•	•	•		•	•	•	•	Good
Okumura <i>et al</i> , 2017 ³¹	•	•	•		•	•	•	•	Good
Shirdel <i>et al</i> , 2020 ³²	•	•	•		•	•	•	•	Good
Okugawa <i>et al</i> , 2018 ³³	•	•	•		•	•		•	Good
Kroenke <i>et al</i> , 2018 ³⁴	•	•	•		•	•	•	•	Good
Fujiwara <i>et al</i> , 2015 ³⁵	•	•	•		•	•	•	•	Good
Hamaguchi <i>et al</i> , 2019 ³⁶	•	•	•		•	•	•	•	Good

Table 2 Characteristics of included studies

Author	Year	n	Type of cancer	Myosteatosi s definition	Software used
Hopkins et al ¹⁸	2019	968	Colorectal	<41 HU if BMI <25, <33 if BMI >25	MATLAB
Malietzis et al ¹⁹	2015	805	Colorectal	<41 HU if BMI <25, <33 if BMI >25	sliceOmatic v.4.3
Martin et al ²⁰	2018	1,139	Colorectal	Age and gender dependent z scores (see paper)	sliceOmatic
Zhuang et al ²¹	2019	973	Gastric	<38.5 HU in men, <28.6 HU in women	GE ADW v.4.5
Dolan et al ²²	2018	650	Colorectal	<35.5 HU in women, <32.5 HU in men	NIH ImageJ v.1.47
Van Vugt et al ²³	2019	233	Cholangiocarcinoma	<38 HU in men, <36 in women	FatSeg (in-house)
Sueda et al ²⁴	2018	211	Colorectal	<41 HU if BMI <25, <33 if BMI >25	SYNAPSE VINCENT
McSorley et al ²⁵	2018	322	Colorectal	<41 HU if BMI <25, <33 if BMI >25	NIH ImageJ v.1.47
Van Vugt et al ²⁶	2018	816	Colorectal	<41 HU if BMI <25, <33 if BMI >25	FatSeg (in-house)
Van Baar et al ²⁷	2018	1,681	Colorectal	<36.4 HU (men) and <31.1 HU (women) for BMI <25 <31.6 HU (men) and <29.3 HU (women) for BMI >25	sliceOmatic v.5.0
Tamandl et al ²⁸	2016	130	Oesophageal	<40 HU	OSIRIX v.5.0
Chakedis et al ²⁹	2018	117	Biliary	<38 HU	Aquarius iNtuition
Van Rijssen et al ³⁰	2017	166	Periampullary	<36.3 HU for males, <36.0 HU for females	sliceOmatic v.5.0
Okumura et al ³¹	2017	109	Cholangiocarcinoma	<38.3 HU for males, <31.0 HU for females	Aquarius iNtuition
Shirdel et al ³²	2020	728	Colorectal	<38.5 HU for males, <36.1 HU for females	imlook4d software
Okugawa et al ³³	2018	308	Colorectal	IMAC: 0.36 for males, 0.24 for females	Aquarius iNtuition
Kroenke et al ³⁴	2018	3,262	Colorectal	<35.5 HU	sliceOmatic v.5.0
Fujiwara et al ³⁵	2015	1,257	Hepatocellular	<44.4 HU for males, <39.3 HU for females	sliceOmatic v.5.0
Hamaguchi et al ³⁶	2019	606	Hepatocellular	IMAC: 0.358 for males, 0.229 for females	Aquarius iNtuition

BMI = body mass index; HU = Hounsfield units; IMAC = intramuscular adipose tissue content

RFS for all cancer types and the heterogeneity decreased from 58% to 32%. Based upon just two studies of colorectal cancer, the overall HR of regression associated with myosteatosi s increased from a random-effects estimate of 1.38 (95% CI 1.07–1.77) to 1.97 (95% CI 1.26–3.07), noting the wide confidence intervals of the latter and the considerable overlap with the former.

Discussion

The results from this meta-analysis indicate that myosteatosi s could be an independent predictor of worse long-term outcomes in those patients undergoing surgery for malignancies of the gastrointestinal tract. This was in terms of both OS and RFS in all cancers, and CSS in colorectal cancer.

Recent research has identified that body composition parameters have a significant impact on outcomes following cancer surgery.³⁷ Sarcopenia, the generalised loss of skeletal muscle mass and function,³⁸ has been shown to impact outcomes significantly and has been highlighted in numerous studies.^{39–41} This has led to more extensive research into other body composition parameters. Myosteatosi s, the process of fat deposition

within the intra- and intermuscular compartments,⁴² has been associated with poorer outcomes following surgery in oncological and non-oncological patients.⁴³ This increased deposition of adipose tissue is thought to lead to a range of physical and physiological abnormalities such as reduced muscle power and an increased incidence of type 2 diabetes.⁴⁴ The exact pathophysiology surrounding myosteatosi s remains uncertain. However, it has been hypothesised that intermuscular fat may alter muscle metabolism and insulin sensitivity by the local secretion of inflammatory adipokines from adipocytes surrounding muscle fibres.⁴⁵ This has been shown to directly impact skeletal myocyte metabolism, which may drive myotubes into lipid oxidation and affect skeletal muscle metabolism.⁴⁶ This impact is particularly heightened when the body is in a highly catabolic state, such as during cancer or chemotherapy. When considering intramuscular fat, the exact pathophysiology remains unclear. Recent literature has shown a demonstrable difference in the level of abdominal myosteatosi s when comparing patients with type 2 diabetes, prediabetes and healthy volunteers.⁴⁷

The results of this review appear consistent across each type of gastrointestinal malignancy analysed. Most of the studies included were analysing patients undergoing

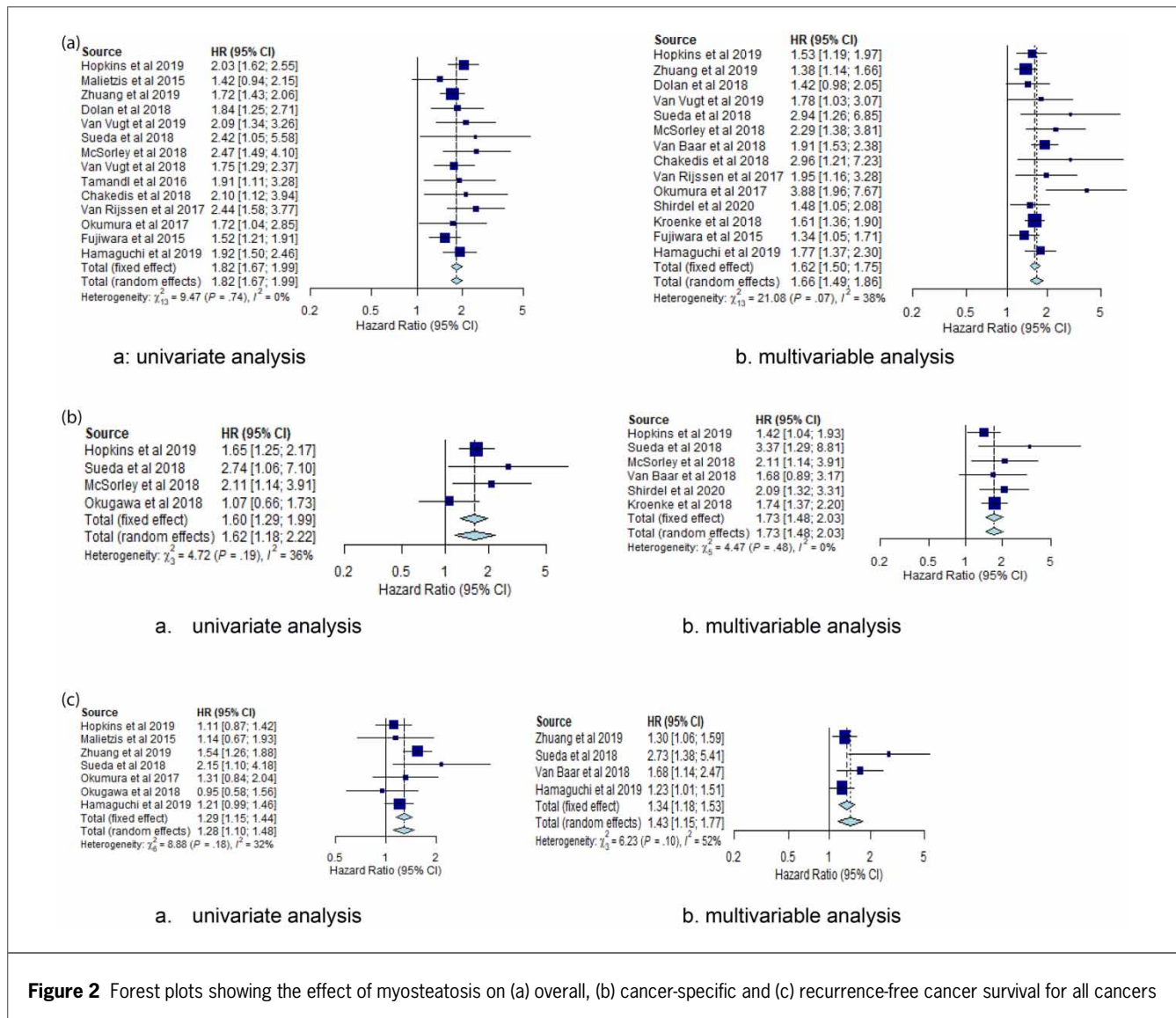


Figure 2 Forest plots showing the effect of myosteatosi on (a) overall, (b) cancer-specific and (c) recurrence-free cancer survival for all cancers

surgery for colorectal cancer, with a paucity of published research analysing the impact in pancreatic and oesophageal cancer patients. Patients with oesophageal and pancreatic malignancies have a high likelihood of being in a poor nutritional state before surgery, so further research is needed to assess the impact of body composition abnormalities on outcomes following oesophagectomy or pancreatectomy.

A potential limitation of this review is the varying cut-off points within the sampled studies. Although recent studies have adopted a more consistent definition of myosteatosi of <41 HU if BMI <25 and <33 if BMI >25, many studies used population defined cut-offs. Notwithstanding variation in definitions, little or no heterogeneity was detected between studies in our meta-analysis. There remains a lack of defined cut-off

points within body composition research due to a range of different factors, including population differences.⁵ Future research would be enhanced by the development of clearly defined parameters, which would allow for a more consistent field of statistics.

Further to this, assessing intermuscular adipose tissue is tricky when a single slice at the third lumbar vertebra is applied with conventional CT analysis. Adipose tissue may be distributed unevenly within a muscle, and an observer would have to evaluate the entire muscle to quantify the amount of intermuscular adipose tissue. It is also possible that patients with cancer may have low radiodensity with or without adipose tissue deposition and the alternative, a high amount of intermuscular fat without low muscle radiodensity.⁴⁸ Therefore, the definition of myosteatosi that prevails in the literature remains complex and

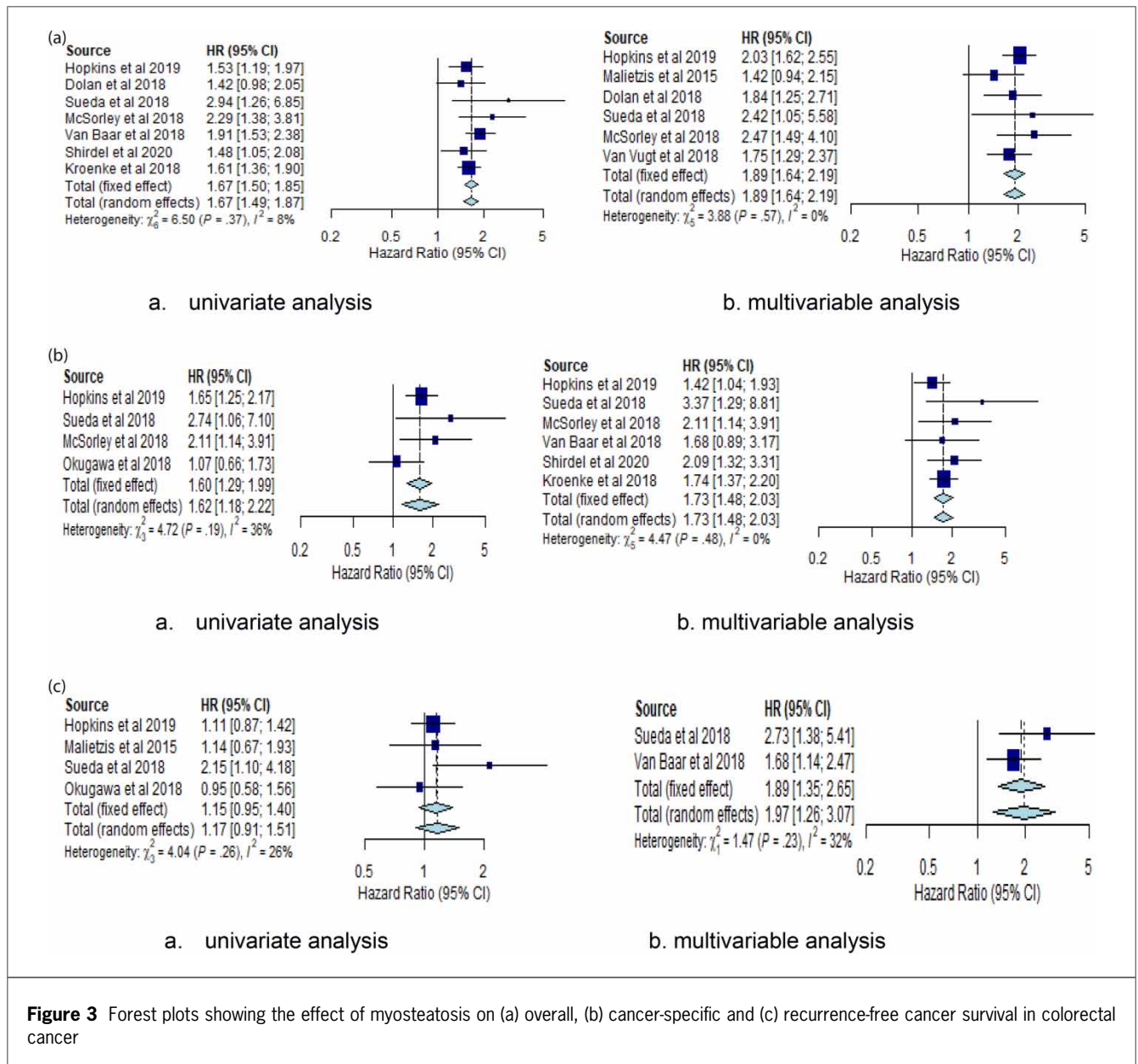


Figure 3 Forest plots showing the effect of myosteatosi s on (a) overall, (b) cancer-specific and (c) recurrence-free cancer survival in colorectal cancer

assumes a homogeneous distribution of fatty deposition within the muscle, whereas adipose tissue may be distributed unevenly within a muscle.

Another limitation inherent in analysing observational data is potential confounding bias and the correlation between the exposure of interest (here, myosteatosi s) and other adjusted prognostic factors in the eligible studies. Therefore, the final estimates should be interpreted with caution. However, the results consistently indicate myosteatosi s as a strong predictor of poor prognosis.

To our knowledge, this is the first meta-analysis to analyse the impact of myosteatosi s on the long-term

outcomes of patients undergoing resectional surgery for gastrointestinal malignancy with curative intent. Recent reviews have identified that myosteatosi s is associated with significantly poorer outcomes following cancer treatment¹⁴ and in the treatment of colorectal cancer alone,¹⁵ including those who did not have surgery and those who were treated with the best supportive care. Gastrointestinal malignancy is well known to be particularly associated with weight loss and a poor nutritional state, so the results of this review add to a growing body of evidence that myosteatosi s identification can be used for both prognostication and preoperative optimisation.

Conclusions

This review demonstrates that myosteatosi s is an independent predictor of worse long-term outcomes following surgery for gastrointestinal malignancy. Because all patients have preoperative CT scans before surgery, myosteatosi s should be utilised in prognostic tools when assessing a patient's suitability for major surgery. This study also highlights the paucity of research analysing the impact of myosteatosi s on outcomes following surgery for non-colorectal tumours. Further research should focus on understanding the impact that this may have on those cancers which were under-represented within this review.

References

- Böhmer AB, Wappler F, Zwissler B. Preoperative risk assessment—from routine tests to individualized investigation. *Dtsch Arztebl Int* 2014; **111**: 437–446. doi:10.3238/arztebl.2014.0437.
- van Stijn MF, Korkic-Halilovic I, Bakker MS et al. Preoperative nutrition status and postoperative outcome in elderly general surgery patients: a systematic review. *JPEN J Parenter Enteral Nutr* 2013; **37**: 37–43. doi: 10.1177/0148607112445900. Epub 2012 May 1. PMID: 22549764.
- Miljkovic I, Zmuda JM. Epidemiology of myosteatosi s. *Curr Opin Clin Nutr Metab Care* 2010; **13**: 260–264. doi:10.1097/MCO.0b013e328337d826.
- Bhullar AS, Anoveros-Barrera A, Dunichand-Hoedl A et al. Lipid is heterogeneously distributed in muscle and associates with low radiodensity in cancer patients. *J Cachexia Sarcopenia Muscle* 2020; **11**: 735–747. doi: 10.1002/jcsm.12533.
- Correa-de-Araujo R, Addison O, Miljkovic I et al. Myosteatosi s in the context of skeletal muscle function deficit: an interdisciplinary workshop at the national institute on aging. *Front Physiol* 2020; **11**: 963. Published 2020 Aug 7. doi:10.3389/fphys.2020.00963.
- Ljungqvist O, Scott M, Fearon KC. Enhanced recovery after surgery: a review. *JAMA Surg* 2017; **152**: 292–298. doi:10.1001/jamasurg.2016.4952.
- Bisch S, Nelson G, Altman A. Impact of nutrition on enhanced recovery after surgery (ERAS) in gynecologic oncology. *Nutrients* 2019; **11**: 1088. Published 2019 May 16. doi:10.3390/nu11051088.
- Lobo DN, Gianotti L, Adiamah A et al. Perioperative nutrition: recommendations from the ESPEN expert group. *Clin Nutr* 2020. S0261-5614(20)30179-5. doi: 10.1016/j.clnu.2020.03.038.
- Pipek LZ, Baptista CG, Nascimento RFV et al. The impact of properly diagnosed sarcopenia on postoperative outcomes after gastrointestinal surgery: a systematic review and meta-analysis. *PLoS ONE* 2020; **15**: e0237740.
- Erős A, Soós A, Hegyi P et al. Sarcopenia as an independent predictor of the surgical outcomes of patients with inflammatory bowel disease: a meta-analysis. *Surg Today* 2020; **50**: 1138–1150. doi: 10.1007/s00595-019-01893-8.
- Guo Z, Gu C, Gan S et al. Sarcopenia as a predictor of postoperative outcomes after urologic oncology surgery: a systematic review and meta-analysis. *Urol Oncol* 2020; **38**: 560–573. doi: 10.1016/j.urolonc.2020.02.014.
- Levolger S, van Vugt JL, de Bruin RW, IJzermans JN. Systematic review of sarcopenia in patients operated on for gastrointestinal and hepatopancreatobiliary malignancies. *Br J Surg* 2015; **102**: 1448–58. doi:10.1002/bjs.9893.
- Lieffers JR, Bathe OF, Fassbender K et al. Sarcopenia is associated with postoperative infection and delayed recovery from colorectal cancer resection surgery. *Br J Cancer* 2012; **107**: 931–6. doi:10.1038/bjc.2012.350.
- Aleixo GFP, Shachar SS, Nyrop KA et al. Myosteatosi s and prognosis in cancer: systematic review and meta-analysis. *Crit Rev Oncol Hematol* 2020; **145**: 102839. doi: 10.1016/j.critrevonc.2019.102839.
- Lee CM, Kang J. Prognostic impact of myosteatosi s in patients with colorectal cancer: a systematic review and meta-analysis. *J Cachexia Sarcopenia Muscle* 2020. <https://doi.org/10.1002/jcsm.12575>.
- So JS, Cheong C, Oh SY et al. Accuracy of preoperative local staging of primary colorectal cancer by using computed tomography: reappraisal based on data collected at a highly organized cancer center. *Ann Coloproctol* 2017; **33**: 192–196. doi:10.3393/ac.2017.33.5.192
- R: A language and environment for statistical computing. R Foundation for Statistical Computing, Vienna, Austria. <https://www.R-project.org>.
- Hopkins JJ, Reif RL, Bigam DL et al. The impact of muscle and adipose tissue on long-term survival in patients with stage I to III colorectal cancer. *Dis Colon Rectum* 2019; **62**: 549–560. doi: 10.1097/DCR.0000000000001352.
- Malietzis G, Currie AC, Athanasiou T et al. Influence of body composition profile on outcomes following colorectal cancer surgery. *Br J Surg* 2016; **103**: 572–80. doi: 10.1002/bjs.10075.
- Martin L, Hopkins J, Malietzis G et al. Assessment of computed tomography (CT)-defined muscle and adipose tissue features in relation to short-term outcomes after elective surgery for colorectal cancer: a multicenter approach. *Ann Surg Oncol* 2018; **25**: 2669–2680. doi:10.1245/s10434-018-6652-x.
- Zhuang CL, Shen X, Huang YY et al. Myosteatosi s predicts prognosis after radical gastrectomy for gastric cancer: a propensity score-matched analysis from a large-scale cohort. *Surgery* 2019; **166**: 297–304. doi: 10.1016/j.surg.2019.03.020.
- Dolan RD, Almasaudi AS, Dieu LB. The relationship between computed tomography-derived body composition, systemic inflammatory response, and survival in patients undergoing surgery for colorectal cancer. *J Cachexia Sarcopenia Muscle* 2019; **10**: 111–122. doi:10.1002/jcsm.12357.
- van Vugt JLA, Gaspersz MP, Vugts J et al. Low skeletal muscle density is associated with early death in patients with perihilar cholangiocarcinoma regardless of subsequent treatment. *Dig Surg* 2019; **36**: 144–152. doi:10.1159/000486867
- Sueda T, Takahasi H, Nishimura J et al. Impact of low muscularity and myosteatosi s on long-term outcome after curative colorectal cancer surgery: a propensity score-matched analysis. *Dis Colon Rectum* 2018; **61**: 364–374. doi:10.1097/DCR.0000000000000958.
- McSorley ST, Black DH, Horgan PG et al. The relationship between tumour stage, systemic inflammation, body composition and survival in patients with colorectal cancer. *Clin Nutr* 2018; **37**: 1279–1285. doi: 10.1016/j.clnu.2017.05.017.
- van Vugt JLA, Coebergh van den Braak RJJ, Lalmahomed ZS et al. Impact of low skeletal muscle mass and density on short and long-term outcome after resection of stage III colorectal cancer. *Eur J Surg Oncol* 2018; **44**: 1354–1360. doi: 10.1016/j.ejso.2018.05.029.
- van Baar H, Beijer S, Bours MJL et al. Low radiographic muscle density is associated with lower overall and disease-free survival in early-stage colorectal cancer patients. *J Cancer Res Clin Oncol* 2018; **144**: 2139–2147. doi:10.1007/s00432-018-2736-z.
- Tamandl D, Paireder M, Asari R et al. Markers of sarcopenia quantified by computed tomography predict adverse long-term outcome in patients with resected oesophageal or gastro-oesophageal junction cancer. *Eur Radiol* 2016; **26**: 1359–67. doi: 10.1007/s00330-015-3963-1.
- Chakedis J, Spolverato G, Beal EW et al. Pre-operative sarcopenia identifies patients at risk for poor survival after resection of biliary tract cancers. *J Gastrointest Surg* 2018; **22**: 1697–1708. doi: 10.1007/s11605-018-3802-1.
- Van Rijssen LB, van Huijgevoort NC, Coelen RJ et al. Skeletal muscle quality is associated with worse survival after pancreatoduodenectomy for periampullary, nonpancreatic cancer. *Ann Surg Oncol* 2017; **24**: 272–280. doi:10.1245/s10434-016-5495-6
- Okumura S, Kaido T, Hamaguchi Y et al. Impact of skeletal muscle mass, muscle quality, and visceral adiposity on outcomes following resection of intrahepatic cholangiocarcinoma. *Ann Surg Oncol* 2017; **24**: 1037–1045. doi: 10.1245/s10434-016-5668-3.
- Shirdel M, Andersson F, Myte R et al. Body composition measured by computed tomography is associated with colorectal cancer survival, also in early-stage disease. *Acta Oncol* 2020; **59**: 799–808. doi: 10.1080/0284186X.2020.1744716.
- Okugawa Y, Toiyama Y, Yamamoto A et al. Clinical impact of muscle quantity and quality in colorectal cancer patients: a propensity score matching analysis. *JPEN J Parenter Enteral Nutr* 2018; **42**: 1322–1333. doi: 10.1002/jpen.1171.
- Kroenke CH, Prado CM, Meyerhardt JA et al. Muscle radiodensity and mortality in patients with colorectal cancer. *Cancer* 2018; **124**: 3008–3015. doi: 10.1002/ncr.31405.
- Fujiwara N, Nakagawa H, Kudo Y et al. Sarcopenia, intramuscular fat deposition, and visceral adiposity independently predict the outcomes of hepatocellular carcinoma. *J Hepatol* 2015; **63**: 131–40. doi: 10.1016/j.jhep.2015.02.031.
- Hamaguchi Y, Kaido T, Okumura S et al. Preoperative visceral adiposity and muscularity predict poor outcomes after hepatectomy for hepatocellular carcinoma. *Liver Cancer* 2019; **8**: 92–109. doi: 10.1159/000488779.
- Malietzis G, Aziz O, Bagnall NM et al. The role of body composition evaluation by computerized tomography in determining colorectal cancer treatment outcomes: a systematic review. *Eur J Surg Oncol* 2015; **41**: 186–96. doi: 10.1016/j.ejso.2014.10.056.
- Santilli V, Bernetti A, Mangone M et al. Clinical definition of sarcopenia. *Clin Cases Miner Bone Metab* 2014; **11**: 177–180.

39. El Amrani M, Vermersch M, Fulbert M *et al*. Impact of sarcopenia on outcomes of patients undergoing pancreatectomy: a retrospective analysis of 107 patients. *Medicine (Baltimore)* 2018; **97**: e12076. doi:10.1097/MD.00000000000012076
40. Chang CD, Wu JS, Mhuirheartaigh JN *et al*. Effect of sarcopenia on clinical and surgical outcome in elderly patients with proximal femur fractures. *Skeletal Radiol* 2018; **47**: 771–777. doi: 10.1007/s00256-017-2848-6.
41. Chan MY, Chok KSH. Sarcopenia in pancreatic cancer - effects on surgical outcomes and chemotherapy. *World J Gastrointest Oncol* 2019; **11**: 527–537. doi:10.4251/wjgo.v11.i7.527
42. Hamrick MW, McGee-Lawrence ME, Frechette DM. Fatty infiltration of skeletal muscle: mechanisms and comparisons with bone marrow adiposity. *Front Endocrinol (Lausanne)* 2016; **7**: 69. Published 2016 Jun 20. doi:10.3389/fendo.2016.00069.
43. Czigany Z, Kramp W, Bednarsch J *et al*. Myosteatosis to predict inferior perioperative outcome in patients undergoing orthotopic liver transplantation. *Am J Transplant* 2020; **20**: 493–503. doi: 10.1111/ajt.15577.
44. Addison O, Marcus RL, Lastayo PC, Ryan AS. Intermuscular fat: a review of the consequences and causes. *Int J Endocrinol* 2014; **2014**: 309570. doi: 10.1155/2014/309570.
45. Vettor R, Milan G, Franzin C *et al*. The origin of intermuscular adipose tissue and its pathophysiological implications. *Am J Physiol Endocrinol Metab* 2009; **297**: E987–E998.
46. Miljkovic I, Kuipers AL, Cvejkus R *et al*. Myosteatosis increases with aging and is associated with incident diabetes in african ancestry men. *Obesity (Silver Spring)* 2016; **24**: 476–482. doi:10.1002/oby.21328
47. Kiefer LS, Fabian J, Rospleszcz S *et al*. Assessment of the degree of abdominal myosteatosis by magnetic resonance imaging in subjects with diabetes, prediabetes and healthy controls from the general population. *Eur J Radiol* 2018; **105**: 261–268. doi: 10.1016/j.ejrad.2018.06.023.
48. Lee J, Lin JB, Wu MH *et al*. Muscle radiodensity loss during cancer therapy is predictive for poor survival in advanced endometrial cancer. *J Cachexia Sarcopenia Muscle* 2019; **10**: 814–826. doi: 10.1002/jcsm.12440.