



PEARL

**Women, higher education and family capital: 'i could not have done it without my family!'**

Webber, Louise Anne

**Published in:**

Research in Post-Compulsory Education

**DOI:**

[10.1080/13596748.2017.1358521](https://doi.org/10.1080/13596748.2017.1358521)

**Publication date:**

2017

**Document version:**

Other version

**Link:**

[Link to publication in PEARL](#)

**Citation for published version (APA):**

Webber, L. A. (2017). Women, higher education and family capital: 'i could not have done it without my family!'. *Research in Post-Compulsory Education*, 0(0).  
<https://doi.org/10.1080/13596748.2017.1358521>

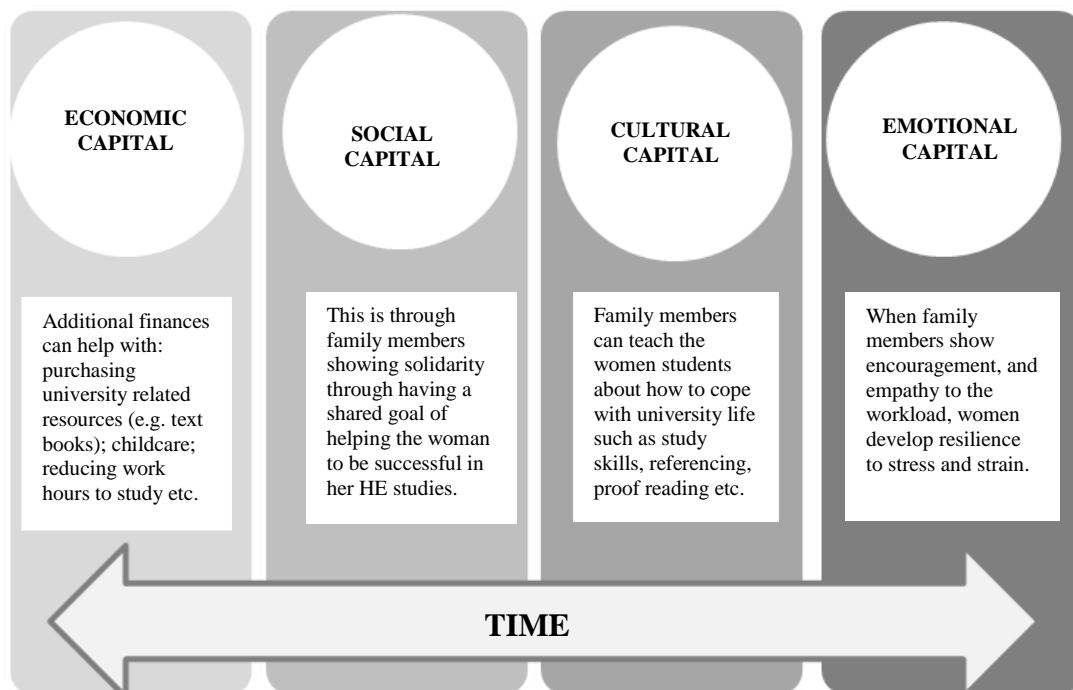
All content in PEARL is protected by copyright law. Author manuscripts are made available in accordance with publisher policies. Wherever possible please cite the published version using the details provided on the item record or document. In the absence of an open licence (e.g. Creative Commons), permissions for further reuse of content should be sought from the publisher or author.

“This is an Accepted Manuscript of an article published by Taylor & Francis in Journal of Post Compulsory Education on 01/09/17 , available online: 04/09/17 <http://www.tandfonline.com/10.1080/02643944.2017.1363812>.”

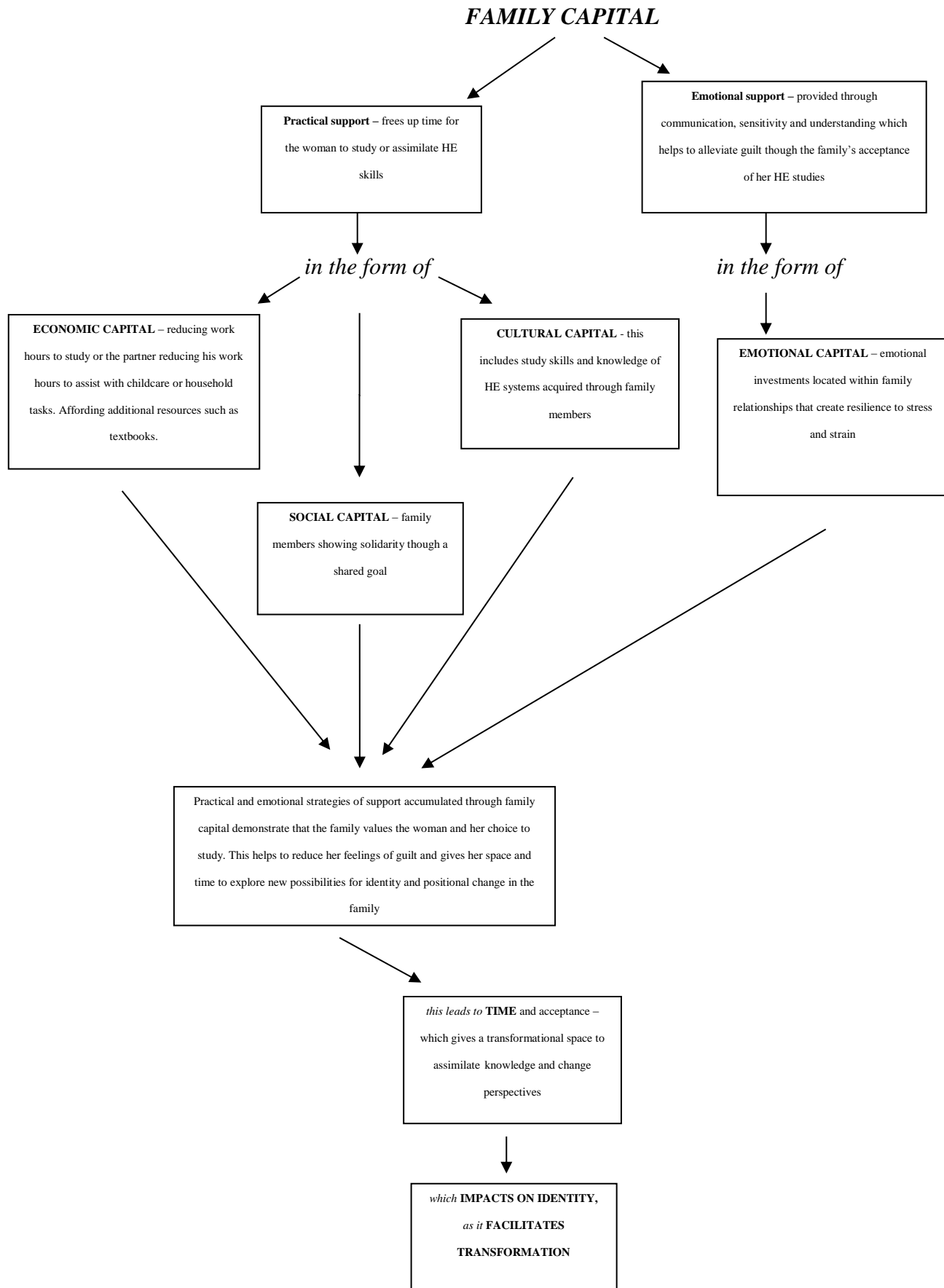
## Women, Higher Education and family capital: ‘I could not have done it without my family!’

HE Education status of participants					
	Full time	Part time	Total		
First year students	3	1	4		
Second year students	1	3	4		
Third year degree top up year students	2	1	3		
Ages of participants					
	20-29	30-39	40-49	50-59	
Number of participants	1	4	5	1	
Age categories of children of participants					
	Other	Primary	Secondary or university		
Number of participants	2 (pre-school and primary) 1 (primary and secondary)	5	3		
Educational status of husbands					
	Up to level 2 (GCSE or O Level)	Up to level 3 (A level, BTEC or NVQ)	Up to level 4 (HNC)	Up to level 5 (HND)	Up to level 6 (Degree)
Number of participants	5	0	1	1	3

Table 1 – Participant details



**Figure 1. Model of family capital** (based on literature review) (Webber 2016)



**Figure 2.** Model of family capital and identity change for women students (Webber 2016)