



PEARL

The construction and validation of the Severe Asthma Questionnaire

Hyland, Michael E.; Jones, Rupert C.; Lanario, Joseph W.; Masoli, Matthew

Published in:
European Respiratory Journal

DOI:
[10.1183/13993003.00618-2018](https://doi.org/10.1183/13993003.00618-2018)

Publication date:
2018

Link:
[Link to publication in PEARL](#)

Citation for published version (APA):

Hyland, M. E., Jones, R. C., Lanario, J. W., & Masoli, M. (2018). The construction and validation of the Severe Asthma Questionnaire. *European Respiratory Journal*, 52(1), 0-0. <https://doi.org/10.1183/13993003.00618-2018>

All content in PEARL is protected by copyright law. Author manuscripts are made available in accordance with publisher policies. Wherever possible please cite the published version using the details provided on the item record or document. In the absence of an open licence (e.g. Creative Commons), permissions for further reuse of content should be sought from the publisher or author.



The construction and validation of the Severe Asthma Questionnaire (SAQ)

Journal:	<i>European Respiratory Journal</i>
Manuscript ID	ERJ-00618-2018.R1
Manuscript Type:	Original Article
Date Submitted by the Author:	n/a
Complete List of Authors:	Hyland, Michael; Plymouth University, School of Psychology; Plymouth Hospitals NHS Trust Jones, Rupert; Plymouth Hospitals NHS Trust; Plymouth University Peninsula Schools of Medicine and Dentistry Lanario, Joseph; Plymouth University, School of Psychology Drakes Circus; Plymouth Hospitals NHS Trust Masoli, Matthew; Plymouth Hospitals NHS Trust
Key Words:	asthma, outcome, Quality of Life

Dear Editor,

Thank you for giving us the opportunity to revise our paper. This has now been done and our replies to reviewers are shown below. We have copied and pasted the full reviewer comments, and these are shown in black. Our replies are shown in red.

We look forward to hearing from you in due course

Yours sincerely

Michael E. Hyland

Reviewer: 1

Comments to the Author

General Comments

This manuscript describes the quantitative validation of a new asthma-specific quality of life (QOL) measure, designed in accordance with FDA recommendations from 2009. Subsequent to previously published qualitative data, a 16-item questionnaire was designed and tested on patients with severe asthma.

The manuscript is well-written. Minor errors are apparent in the results section, and certain tables and figures would benefit from amendment or exclusion. A few additional points warrant mentioning in the discussion, especially that no distinction was made for participants on or off oral corticosteroids (OCS). Specific comments are outlined below.

Overall, this manuscript describes a new patient reported outcome measure (PROM) specific for severe asthma, considering elements that other PROMs do not. The SAQ is likely to be a valuable addition to the field.

We thank the reviewer for these positive remarks

Specific Comments

1. Abstract

a. The abstract is concise and reflects the manuscript.

2. Introduction

a. The introduction sets the appropriate context for the rest of the manuscript.

3. Method

a. Comprehensive methods section.

b. Grammatical error, page 4 line 32.

Thanks, the tense has been corrected

4. Results, Tables & Figures

a. Table 1 – for greater clarity please add gender and race demographics, as well as proportions on biologics and OCS if possible.

We agree and these have been added

b. Page 7, line 33 – seems to be referring to Table 2, not Table 3.

Yes, this has been corrected

1
2
3 c. Table 2 – good description in text and good representation of statistical
4 significance in table.
5 d. Page 8, line 17 – it looks like the authors are referring to Table 3, not Table 2.

6 **Thanks, this has been corrected**

7 e. Table 4 is good.

8 f. Table 5 – if authors wish to include this table, they should explain the OCS
9 dose is an “estimated annual cumulative dose” (consider inserting this as a title, in
10 the style of Table 4).

11 **We agree and have added the word estimated as suggested**

12 g. Please explain why 6595mg OCS per year is a clinically relevant cut-off, as
13 this is still not clear within the text.

14 **The dose of 6595 OCS per year was chosen as this is nearer a prednisolone
15 equivalent dose of 20mg/day. This allowed appropriate cut offs to allow meaningful
16 statistical analysis but also cutoffs that were relevant to patients and clinicians.**

17 h. Figure 1 is good.

18 i. Figure 2 does not include all of the questionnaires in the graph. Consider
19 amending or removing.

20 **Thanks for pointing this out- we considered this before submitting. The two
21 questionnaires shown in Figure 2 use 7 point response scales, and so are
22 comparable. Other questionnaires have different response scales have other
23 response scales and are therefore not comparable. We also considered normalising
24 the results, but this creates other problems as the AQLQ has a tighter (i.e., less
25 varied) distribution compared to the SAQ. As the AQLQ is the main comparator for
26 an asthma specific clinical trial, we wished to highlight the slight difference between
27 these two scales.**

30 5. Discussion

31 a. This section is well constructed.

32 b. As the SAQ was designed specifically in response to existing PROMs not
33 considering OCS burden (Ref. 10), it is important to mention that no distinction was
34 made for patients on or off OCS. This might be a limitation to the study, or it might
35 suggest the SAQ is advantageous irrespective of OCS burden in severe asthma.

36 **Thank you for helping us clarify this point – we address it now in the conclusions,
37 i.e., the SAQ is validated in a severe asthma population with different patterns of
38 treatment.**

39 c. It is worth mentioning in the discussion that the better results seen for the 0.5-
40 9.5mg OCS group (in Table 4) were not statistically significant, and “may simply be
41 due to random error”.

42 **This was checked out to make sure and in fact there are significant differences. We
43 have explored this further and presented data showing it is possible that the
44 difference is due to the higher proportion of patients on biologics in that group.**

45 d. Page 10, line 38 – “and 18% rated it [very difficult] for other family members.”
46 Consider amending sentence as shown.

47 **Thanks, we have amended as suggested.**

48 e. Page 12, line 41 “use of biologics... would not be expected to affect
49 comparisons between outcome measures.” But the use of biologics might reduce the
50 need for oral steroids.

51 **We have removed this comment. The referee is correct, but this raises numerous
52 issues that this paper cannot address (see point c above). It is likely that there is a**

1
2
3 complex relationship between biologics and OCS on quality of life that requires
4 further investigation.

5 f. Under limitations, no comment made for level of literacy needed to complete
6 questionnaires.

7 We have calculated the Smog reading score and have presented this in the
8 introduction. The Flesch score and Flesch-Kincaid reading score may be more
9 familiar to readers, but these have been criticised recently and the new
10 recommendation is to use the Smog.
11

12 g. The study was done in the south west of the UK, which is not a diverse
13 population. This should be specified as such within the limitations section without the
14 implication that the study generalises to the UK population as a whole.
15

16
17 The UK severe asthma registry has published demographic data of patients with
18 severe asthma.
19

20 We accept that the South west of UK is not a particularly ethnically diverse
21 population and completely agree with the reviewer this should be stated within the
22 limitations. However we feel the population is not dissimilar to the UK demographic
23 data presented within the UK severe asthma registry. E.g.
24

25
26 In all the centres contributing data 91% of patients with severe asthma were white
27 (100% in Belfast and 96% in Manchester).
28

29 However further validation in ethnically and culturally diverse populations is required.
30

31 6. References

32 a. The manuscript is appropriately referenced.
33
34
35

36 Reviewer: 2
37

38 Comments to the Author

39 The authors have produced a well written manuscript detailing the construction and
40 validation of a novel PROM for severe asthma.
41

42 Major criticisms:

- 43
44 1. Please explain in the introduction why 2 components are required for this
45 novel PROM, i.e. both the SAQ and SAQ Global.
46
47

48 Thanks for raising this important issue which is now explained and referenced in the
49 introduction and the issue returned to with additional references in the discussion.
50

51 2. The demographics table would benefit by being expanded to show the data for
52 each of the GINA steps.
53

54 We have expanded the demographic table as suggested separating GINA step 4 & 5
55 and including ethnicity and ICS dose (mean 1700mcg/day).
56

57 See table.
58
59
60

1
2
3
4
5 3. Why have GINA 2 and 3 patients been included in the analysis when they are
6 outside the ERS/ATS definition of severe asthma?
7

8 We thank the reviewers for pointing this out.
9

10 These patients were identified through our Emergency department follow up service
11 (rather than the severe asthma clinic) and although were all in a stable state (>4
12 weeks post exacerbation) they were at higher risk due to previous exacerbations, still
13 symptomatic and therefore deemed eligible for enrolment into the study.
14

15
16
17 The one patient at GINA step 2 was seen as follow up for a previous Emergency
18 Department visit and although did not meeting the criteria for severe asthma was at
19 higher risk and enrolled in the study erroneously. As the study was based on an
20 intention to treat the data has been included although we have now stated this
21 clearly within the text.
22
23

24
25 The GINA 2016 asthma guidelines state Step 4 asthma treatment is defined as
26 requiring Medium / high dose ICS/LABA.
27

28 Medium dose ICS = 500-1000mcg/day BDP equivalent
29

30 High dose > 1000mcg/day BDP equivalent
31

32 On further reviewing these patients they meet the criteria for classification as GINA
33 step 4.
34

35 Of the 10 patients previously classified as GINA step 3:

36 3 patients were on ICS > 1000mcg /day BDP equivalent

37 5 patients were on ICS 1000mcg/day BDP equivalent

38 2 patients were on ICS 800mcg/day BDP equivalent
39

40 All were receiving an ICS / LABA combination.
41
42
43

44
45 Therefore we thank the reviewers for highlighting this discrepancy and we have
46 reclassified the patients into the appropriate GINA step 4 classification.
47
48
49

50
51 4. Please explain mean prednisolone dose ranges? Why not 10-20 and greater than
52 20?

53 These dose ranges were selected on a statistical basis to achieve approximately
54 equal group sizes. This has now been stated in the results section.
55
56
57
58
59
60

1
2
3 5. Please explain the cumulative OCS ranges? 1120mg/year is equivalent to 40mg
4 od for 7 days on 4 occasions and I disagree that this is more clinically relevant than
5 840mg for instance (30mg od for 7 days on 4 occasions).
6

7 These are estimated cumulative OCS doses and as such likely to be an
8 underestimate of the true overall steroid burden.
9

10 In our experience patients with severe asthma who exacerbate will frequently have
11 at least 1 week of high dose prednisolone but often have longer courses of OCS
12 than 1 week, not infrequently requiring a steroid taper.
13

14 We completely agree that a cumulative OCS dose of > 840mg is clinically relevant
15 but for pragmatic reasons we defined the estimated OCS burden of 1 exacerbation
16 as prednisolone 40mg OD for 7 days. This figure was chosen as the British Thoracic
17 Society 2016 asthma guidelines advise prednisolone 40-50mg/day for at least 5 days
18 or until recovery.
19

20 The GINA 2016 guidelines advise:
21

22 Adults - prednisolone 1mg/kg/day up to 50mg, usually for 5–7 days.
23
24
25

26 We have added this to the text
27

28 6. Please add to the discussion an explanation as to why the 0.5-9.5mg OCS group
29 have a better ACT and SAQ than the other groups. It may be due to random error, or
30 it may be that low dose OCS improves asthma, which, after all is why it is used
31 clinically. Surely this will need to be reviewed in larger numbers to see if this is a true
32 finding,
33

34 It is actually statistically significant for some but not all outcome measures. We have
35 explored this further and presented data showing it is possible that the difference is
36 due to the higher proportion of patients on biologics in that group.
37
38
39

40 In addition, if you have not already done so, please compose a short sentence of
41 120 characters or less summarising the most important findings, or message, of your
42 study. This will be published alongside the abstract of your article and will allow the
43 ERS to generate interest in your study via its official publications Twitter feed
44 (@ERSpublications).
45

46 This was done in the original version and shown on the front page.
47
48
49
50
51
52
53
54
55
56
57
58
59
60

1
2
3 The construction and validation of the Severe Asthma Questionnaire (SAQ).

4 **Authors:** Michael E Hyland^{1,2}, Rupert C Jones^{2,3}, Joseph W Lanario^{1,2}, Matthew
5
6 Masoli²
7

8
9 1. School of Psychology, University of Plymouth of Plymouth, Plymouth, UK. 2.
10
11 Plymouth Hospital's NHS Trust, Plymouth, UK 3. Peninsula School of Medicine and
12
13 Dentistry, University of Plymouth, UK
14

15
16 Correspondence: Prof Michael Hyland, School of Psychology, Plymouth University,
17
18 Plymouth, PL4 8AA, UK. Email: mhyland@plymouth.ac.uk
19

20 **Author contributions**

21
22
23
24 All four authors contributed to the design of the study and all four authors contributed
25
26 to the writing of the paper. MH wrote the first draft and was responsible for the
27
28 analysis. MM and RJ were responsible for recruitment and data collection. JL
29
30 collected the data and contributed to the analysis.
31
32
33
34

35 **Funding provided by AstraZeneca (non-promotional grant)**

36
37
38
39 Word count: 2,898

40 41 **Take Home Message**

42
43
44 This paper describes the validation process for a new severe asthma specific quality
45
46 of life questionnaire, the SAQ.
47

48
49 Running title: Severe asthma quality of life assessment.
50
51
52
53
54
55
56
57
58
59
60

Abstract

Background

The USA's Food and Drug Administration's procedure for scale validation requires a documented stepwise process of qualitative and quantitative data. The aim of this paper is to provide the final quantitative validating data.

Methods

The severe asthma questionnaire (SAQ), asthma control test (ACT), MiniAQLQ, and EQ-5D-5L were completed by 160 patients attending a severe asthma clinic; 51 patients completed the SAQ on two occasions for test-retest reliability analysis. The SAQ produces two scores, an SAQ score based on the average of 16 items and a SAQ-global score from a single 100-point global quality of life scale.

Results

Construct validity was demonstrated through factor analysis of the 16 items, convergent validity by correlations of > 0.6 between the SAQ, SAQ-global and other questionnaires, and discriminant validity by the ability of the SAQ and SAQ-global to distinguish between different treatment levels. Test-retest reliability (intra-class correlation) was 0.93 for the SAQ and 0.93 for the SAQ-global, and the alpha coefficient for the SAQ was 0.93.

Conclusions

The SAQ was developed using recommended qualitative and quantitative procedures for scale development, and can be used to gain insight into patients' perceptions of the impact of severe asthma and its treatment on their lives.

Keywords: Asthma; Outcome; Quality of Life.

Introduction

Patients with severe and difficult-to-treat asthma comprise a small proportion (5-10%) of all asthmatic patients, yet are responsible for a disproportionate degree of asthma morbidity and costs [1,2]. Quality of life assessment forms an essential part of asthma assessment as measures such as respiratory symptoms and lung function may not convey the true limitations caused by the disease from the patient's perspective [3]. Compared to mild and moderate asthma, patients with severe asthma have additional quality of life deficits caused by multiple and more severe exacerbations that disrupt the lives of patients and their relatives, comorbidities, and higher treatment burden, particularly oral corticosteroids, [4].

The US Food and Drug Administration (FDA) published recommendations for validating Patient Reported Outcome Measures (PROMs) in 2009 [5]. The FDA recommends a stepwise process of validation where *firstly* content validity is established by documented qualitative research and *secondly* construct and other validity is established through quantitative methods.

The three most commonly used asthma specific health related quality of life (HRQoL) scales [6, 7, 8] were published prior to the FDA's 2009 guidelines and include symptom items that are perceived negatively in this context by patients [9]. Additionally, these and other published asthma scales fail to assess quality of life deficits specific to severe asthma [10]. Thus, although existing scales are valid in terms of earlier definitions of validity [11, 12] or for mild and moderate asthma, they are not valid in terms of the FDA's 2009 guidelines when used in people with severe asthma.

1
2
3 The qualitative stage of the development and content validation of the severe
4 asthma questionnaire (SAQ) has been reported in two studies [10,13]. The first study
5 [10] showed that in addition to deficits experienced in mild and moderate asthma,
6 those with severe asthma had additional problems in their lives primarily caused by
7 two factors. First, the side effects of medication produced a variety of problems
8 including mood changes, changes in self-perception, problems with eating, sleep
9 disturbance, and appearance. Second, exacerbations (in particular those leading to
10 hospitalisation) created problems for the patient and the wider family.
11
12
13
14
15
16
17
18
19
20
21

22 Using our findings from the first study we drafted a severe asthma specific
23 questionnaire, and subsequently conducted four focus groups in which patients with
24 severe asthma provided iterative changes to the design and content of the draft
25 questionnaire [13]. The aim of this second phase was to ensure that the
26 questionnaire was able to correctly capture the kind of information patients felt
27 important in relation to their quality of life. Patients defined the response scale,
28 combined two items, split one item to assess different impacts on family lives,
29 advised on recall period and optimised the wording of individual items. In addition,
30 patients expressed a desire to provide an overall assessment of their quality of life
31 (see the online supplement, Figure E1).
32
33
34
35
36
37
38
39
40
41
42
43
44
45

46 The SAQ comprises 16 questions about different aspects of life and a global
47 question that assesses their quality of life overall. The SMOG grade [14] for the
48 SAQ is 5.9, indicating suitability for a reading age of at least 11-12 years. The
49 unweighted aggregation of the 16 questions produces a score similar in methodology
50 with other quality of life questionnaires. The additional global question is used for two
51
52
53
54
55
56
57
58
59
60

1
2
3 reasons. First, patients express a strong preference for providing an overall score in
4
5 contrast to those requiring a differentiation between different aspects of life. The
6
7 second reason is psychological. Patients make judgements, including judgements
8
9 about their lives, using either one or a combination of two cognitive processes, called
10
11 System 1 and System 2. System 1 judgements are fast, automatic and the process
12
13 unavailable to consciousness. System 2 judgements are slow, deliberative, and
14
15 people can introspect the process [15]. A patient's response to a question in clinic
16
17 'how are you?' will be influenced primarily by a System 1 judgement. The use of two
18
19 types of measure, the SAQ score based on the 16 items and the SAQ global score
20
21 provides a way of capturing these different kinds of judgement [16]. Single item
22
23 scales are less preferred in clinical trials because the use of multiple items reduces
24
25 error variance.
26
27
28
29
30

31 The aim of this study was to provide the final stage of validation required by the FDA,
32
33 namely a quantitative study that establishes construct and other types of validity.
34
35
36
37

38 **Method**

39 **Participants**

40
41
42 Patients diagnosed with severe asthma as defined by the international consensus
43
44 statement from the European Respiratory and American Thoracic Societies [1] aged
45
46 ≥ 16 years of age who attended the Plymouth severe asthma service were invited to
47
48 participate. Those with significant other conditions contributing to their respiratory
49
50 symptoms, e.g. lung cancer, heart failure or severe COPD were excluded.
51
52
53
54
55

56 **Questionnaires**

1
2
3
4
5 *Severe Asthma Questionnaire (SAQ)* comprises 16 items, with response options on
6 a 7-point scale averaged to produce the SAQ score (scores 1 – 7) and a 100-point
7 Borg-type scale [17] producing the SAQ-global score (scores 0 – 100). Quantifiers
8 are indicated against all seven of the SAQ response options. A Borg scale is a
9 category rating scale with quantifiers at either end and additional, empirically placed
10 quantifiers along the categories of the scale. The SAQ-global was adapted from an
11 existing global quality of life scale [18] see www.saq.org.uk.
12
13
14
15
16
17
18
19
20
21
22

23 *Mini Asthma Quality of Life Questionnaire (MiniAQLQ)* [7] comprises 15 items with
24 response options on a 7-point scale with responses averaged (scores 1-7).
25
26
27
28

29 *Asthma Control Test (ACT)* comprises five symptom and medication items (5
30 response options per item) totalled to produce an asthma control score. [19].
31
32
33
34
35

36 *EQ-5D-5L* comprises five quality of life items (5 response options per item) which
37 were averaged to produce an EQ-5D-5L score and the
38
39 *EQ5D-VAS*. A 100-point visual analogue scale (scores 1 – 100) [20].
40
41
42
43
44
45

46 Criteria for missing data are shown in the online supplement.
47

48 **Clinic data**

49

50 Clinic data collected were: spirometry (FEV1), prednisolone dose (mg/day), number
51 of severe exacerbations in the last 12 months requiring systemic steroids, Global
52 Initiative for Asthma (GINA) severity, BMI, estimated cumulative oral corticosteroid
53
54
55
56
57
58
59
60

1
2
3 (OCS) dose per year. This was calculated by multiplying the participant's
4 maintenance steroid dose by 365 days, and adding an estimate of OCS use per
5 exacerbation in the previous 12 months. Based on British Thoracic Society and
6
7 GINA guidance one exacerbation was judged to comprise prednisolone 40mg/day
8 multiplied by 7 days which equates to 280mg of prednisolone per exacerbation
9
10 [21,22].
11
12
13
14
15
16
17

18 **Procedure**

19
20 Patients were recruited to the validation study or the reliability study or both studies.
21
22 Questionnaires were completed either at home (postal return of questionnaire) or in
23 clinic. Participants' data were included in the analysis of test re-test reliability if their
24
25 ACT scores did not change by the Minimum Clinically Important Difference (MCID) of
26
27 3 points or more and they reported stable asthma (see online supplement, Figure
28
29 E2).
30
31
32
33
34
35

36 **Analysis**

37
38 Analysis was on an intention to treat basis (see online supplement, Figure E2).
39
40 Convergent validity between questionnaires was established using Pearson
41
42 correlations. Groups of patients were identified by (a) level of maintenance dose of
43
44 OCS (mg/day) and (b) estimated cumulative OCS dose per year. Differences
45
46 between groups (discriminant validity) were tested by one-way analysis of variance
47
48 (ANOVA) and where significant followed by Least Significant Difference (LSD) post
49
50 hoc tests. Construct validity was tested by exploratory factor analysis using principal
51
52 axis factoring following recommended practice [23, 24]. Evidence that the items
53
54 could be aggregated into a single scale score was tested by examining whether the
55
56
57
58
59
60

1
2
3 scree test indicated a unifactorial solution and whether items loaded significantly (>
4 0.3) on the first factor. Test-retest reliability was calculated by intra-class
5 correlations. Internal consistency was calculated by Cronbach's alpha coefficient. All
6 analysis was conducted using IBM SPSS statistics 24.
7
8
9
10
11
12
13

14 **Ethical approval**

15
16 The study was approved by the Plymouth Hospitals NHS Trust and REC/HRA,
17 ethical approval number 16/NE/0188, IRAS ID: 207601. All patients provided
18 informed written consent.
19
20
21
22
23

24 **Results**

25 *Questionnaire completion and return.*

26
27
28
29
30
31
32
33

34 For the validation study 260 participants were invited to participate, 20 declined to
35 participate, 54 failed to return questionnaires by post, and 26 patients failed to attend
36 their clinic appointment and provide written informed consent leaving 160
37 participants. For the test-retest reliability study 115 patients were invited to
38 participate, 10 declined. Of the 105 who consented for the test-retest reliability study,
39 returned questionnaires were received from 67 patients, and 16 patients were
40 excluded because their ACT score had changed by 3 points or more leaving 51
41 participants (37 female). (See online supplement, Figure E2). One patient at GINA
42 step 2 was recruited although they did not meet the criteria for severe asthma they
43 were at higher risk and enrolled in the study in error. Their data has been included in
44
45
46
47
48
49
50
51
52
53
54
55
56
57
58
59
60

1
2
3 the analysis as this studied used intention to treat criteria. Participant demographics
4 are displayed in Table 1.
5
6
7

8
9
10 Of the 160 patients who participated in the validation study, completed
11 questionnaires were as follows: SAQ (154/96% completed), MiniAQLQ (146/91%
12 completed), ACT (159/99% completed). One hundred participants were asked to
13 complete the EQ-5D-5L (96/96% completed).
14
15
16
17
18

19
20
21 Table 2 shows the correlations between the different questionnaires. All correlations
22 were above 0.60, showing convergence between the different questionnaires. In
23 addition, the correlations between all questionnaires, BMI and FEV1 percent
24 predicted are also shown.
25
26
27
28
29

30
31
32 Table 3 shows the mean, range, and standard deviation of responses to the 16 items
33 of the SAQ. Absence of floor or ceiling effects is indicated by no SAQ item having a
34 standard deviation less than one point away from an end point. In addition, for all
35 items participants used the full range of response options with some using every
36 option between 1 and some 7 for all items (see Table E1 in the online supplement).
37
38 These results show that no item should be rejected on the basis of poor distribution.
39
40 The SAQ scores ranged from 5 (extremely bad quality of life) to 100 (perfect quality
41 of life) (see Table E3 in the online supplement).
42
43
44
45
46
47
48
49

50
51
52 To test whether it is valid to aggregate the 16 items into a single scale score,
53 exploratory factor analysis of the SAQ revealed a one factor solution using the scree
54
55
56
57
58
59
60

1
2
3 test (the first four eigenvalues were 9.91, 1.11, 0.92, 0.72,) accounting for 60% of the
4
5 variance. The factor scores are shown in Table 3. All factor scores are above 0.6
6
7 showing that despite difference in content all items were related to the same latent
8
9 variable. Cronach's alpha coefficient was 0.96. Test-retest reliability as measured by
10
11 intra-class correlation was 0.93 (CI 0.87-0.96) for the SAQ and 0.93 (CI 0.86-0.96)
12
13 for the SAQ-global, showing that the SAQ is a reliable scale. Test-retest reliability
14
15 was also calculated individually for each item of the SAQ (see Table E3 in the online
16
17 supplement).

18
19
20
21
22 Table 4 shows the mean and standard deviation score values for each of the six
23
24 scales as a function of four groups of patients: no maintenance prednisolone, 1-9mg
25
26 per day, 10 mg per day, and >10mg per day (ranges were selected to achieve
27
28 groups of approximately equal size). All scales were significantly different across the
29
30 four groups $p < 0.001$, showing that the SAQ can discriminate between groups that
31
32 are theoretically predicted to be different based on asthma severity. To compare the
33
34 discrimination of different questionnaires between the 10mg/day and >10mg/day
35
36 groups as a function of maintenance dose, we conducted LSD tests. Significant
37
38 differences were found for the SAQ score ($p = 0.01$), SAQ-global score ($p = 0.01$) and
39
40 EQ5D-VAS score ($p = 0.02$), but not the MiniAQLQ score ($p = 0.13$) nor the ACT score
41
42 ($p = 0.34$) nor EQ-5D-5L score ($p = 0.23$). With regard to other paired comparisons,
43
44 there is pattern of poorer outcome with increasing dose of OCS except for the
45
46 comparison between those on no maintenance OCS versus those on between 1 –
47
48 9mg. For these comparisons (using LSD tests), the 1 – 9mg dose had better quality
49
50 of life than the no maintenance dose for the MiniAQLQ ($p = 0.008$), the ACT
51
52 ($p = 0.001$), the SAQ ($p = 0.017$) but not the SAQ-global ($p = 0.19$), the EQ-5D-5L
53
54
55
56
57
58
59
60

1
2
3 ($p=0.2$), or the EQ5D-VAS ($p=0.4$). Because the 1 – 9mg dose group had better
4 quality of life than the no maintenance dose group, we examined possible
5 differences in biologic prescription between the four groups. In the zero dose group,
6
7 17/101 (17%) were on biologics whereas the figures for the other three groups were
8
9 1 – 9mg = 9/17 (53%), 10mg = 6/20 (30%), > 10mg = 6/22 (27%). Figure 1 provides
10
11 a visual comparison of the SAQ and MiniAQLQ as a function of maintenance
12
13 prednisolone dose.
14
15
16
17
18
19

20
21 Participants were allocated to estimated annual cumulative OCS dose groups: (a) 0
22
23 – 1119mg/year, (b) those on 1120-1460mg/year, (c) those on 1461-3650mg/year, (d)
24
25 those on 3651-6595mg/year and (e) >6595mg/year. These doses were chosen to be
26
27 clinically relevant, e.g. 1120mg/year \approx 4 courses of OCS, 3650mg/year \approx 10mg/day
28
29 prednisolone, > 6595 \approx 20mg/day prednisolone. Table 5 shows the mean scores for
30
31 these five groups for each of the six scales. Figure 2 provides a comparison of the
32
33 SAQ and MiniAQLQ mean scores at different doses of prednisolone.
34
35
36
37

38
39 One-way ANOVA showed that there was a significant difference ($p<0.001$) between
40
41 the five estimated cumulative OCS dose groups for all questionnaires. In order to
42
43 carry out post hoc tests that are equivalent to those of Table 4, we combined the two
44
45 groups with the highest burden, namely those on 3651-6595mg/year and those on
46
47 >6595 mg/year. ANOVA was repeated on the four groups (all questionnaires were
48
49 significant at $p<0.001$). Significant differences were found between those on 1461-
50
51 3650mg/year, and >3650 mg/year for the SAQ score ($p>0.001$), MiniAQLQ score
52
53 ($p>0.01$), ACT total ($p = 0.004$), EQ-5D-5L score ($p=0.003$) and the SAQ-global
54
55 score ($p=0.006$) and the EQ5D-VAS ($p=0.04$).
56
57
58
59
60

Discussion

The FDA's guidance for valid questionnaire construction [5] requires documentation of a qualitative stage of research followed by a quantitative stage. The SAQ was developed on the basis of qualitative research reported elsewhere [10, 13]. In this paper we provide details of the quantitative stage.

People with severe asthma experience difficulty in a number of different domains of life experience, some of which are not experienced by those with mild and moderate asthma. For example, 28% felt that irritability, a side effect of OCS, made life either very difficult or very, very difficult, and 27% experienced this level of difficulty with food. Thirty nine percent reported that 'problems at night' made life at least very difficult, where sleep disturbance can be caused either by asthma symptoms (which cause waking) or the side effects of OCS (which cause sleep difficulty getting to sleep, waking and additional problems during the night). Two family items are included in the SAQ as a result of the earlier qualitative research [13]. Twenty percent of patients rated their family lives as at least very difficult for themselves, and 18% rated it at least very difficult for other family members, confirming the earlier qualitative research that severe asthma impacts family life not only for the patient but also the patient's family. These descriptive results show that people with severe asthma can experience non-trivial disutility in domains of experience which are not included in questionnaires designed for mild and moderate asthma, with particularly high disutility recorded for 'the way I look', 'getting tired' and the two items assessing different worries about medication.

1
2
3 Although some people with severe asthma experience very poor quality of life, this is
4 not a universal experience. For example, although 32% of people in this study felt
5 they had moderately bad quality of life or worse, 24% felt they had good quality of life
6 or better. Although some of this difference can be explained by severity and
7 treatment differences (those with greater OCS burden report poorer quality of life)
8 the relationship between severity, treatment and quality of life is complex.
9
10
11
12
13
14
15
16
17

18 In addition to providing descriptive data on people with severe asthma, the data
19 provide construct validity for the SAQ. Statistical analysis showed that all 16 items
20 could be aggregated into a single score and that no item should be rejected on
21 purely statistical grounds. The intra-class test-retest reliability of the SAQ and SAQ-
22 global of 0.93 compares well with other questionnaires e.g. the MiniAQLQ of 0.83 [7].
23
24 The SAQ score and the SAQ-global score correlate with other asthma and generic
25 scales thereby providing convergent validity. The SAQ score discriminates between
26 groups of patients defined by maintenance prednisolone dose and defined by
27 estimated cumulative OCS burden per year, thereby providing discriminant validity.
28
29 There is a trend for the SAQ to demonstrate greater QoL impairment with increasing
30 OCS burden compared to the MiniAQLQ but the study is underpowered to make
31 statistical comparisons between scales.
32
33
34
35
36
37
38
39
40
41
42
43
44
45
46

47 All outcome measures showed a trend towards poorer quality of life with greater
48 doses of OCS, except for the comparison between those on no prednisolone versus
49 those prescribed between 1 and 9mg per day. We do not know why the 1 – 9mg
50 group had better quality of life than those without a maintenance dose, but it may be
51 due to the higher use of biologics in the 1 – 9mg group. Further studies are needed
52
53
54
55
56
57
58
59
60

1
2
3 to clarify the complex relationship between biologics and OCS on quality of life
4
5 versus asthma symptoms [25].
6
7
8

9
10 The SAQ differs from other asthma-specific scales in that it includes a single item
11
12 100-point scale of global quality of life, the SAQ-global, which is included due to
13
14 patient request. In this respect the SAQ is similar to the EQ5D where there is also a
15
16 single item 100-point scale, the EQ5D-VAS. The SAQ-global is a 0-100 Borg type
17
18 scale adapted from another scale [18], and research shows the use of additional
19
20 quantifiers is more reliable than the format used in the EQ5D-VAS [15] where only
21
22 the end points have quantifiers. With the exception of the EQ5D and EQ5D-VAS, all
23
24 questionnaires show weak to moderate correlations with lung function indicating that
25
26 lung function plays a modest causal effect on these measures. The absence of a
27
28 significant correlation for the EQ5D and EQ5D-VAS suggests that these two
29
30 measures may not be valid for assessing the quality of life of severe asthma.
31
32
33
34
35

36 Multiple item scales often have better reliability than single item scales for statistical
37
38 reasons. Consistent with other research showing Borg scales to be more reliable
39
40 than visual analogue scales [18], our data show that the SAQ-global is highly reliable
41
42 and as reliable as the SAQ score. The SAQ-global also correlates well with other
43
44 scales. Comparison between the EQ5D and EQ5D-VAS suggests that the EQ5D-
45
46 VAS measures a broader concept than the EQ5D [16], and the same difference may
47
48 apply to the SAQ score and SAQ-global. Additionally, response to these two different
49
50 parts of the SAQ may reflect different cognitive processes – a fast automatic process
51
52 for the SAQ-global and a slow deliberate process for the SAQ score [15]. Our study
53
54 shows that ratings of ‘Good quality of life’ on the SAQ-global (i.e., those in the 70-79
55
56
57
58
59
60

1
2
3 range) equates to 'makes my life slightly difficult' (i.e. a mean score of 4.8 on the
4
5 SAQ – see Table E3 in the online supplement), showing that the way a question is
6
7 asked affects the patient's response. Both types of measure can be useful, but it is
8
9 likely that the SAQ-global provides a value more consistent with patients' immediate
10
11 response when clinicians ask about their asthma.
12
13
14
15

16 Limitations

17
18 The estimated cumulative OCS dose might be underestimate of OCS burden as
19
20 patients with severe asthma may often require a longer course of OCS for an
21
22 exacerbation than the 7 days used in our calculation. Use of biologics were not
23
24 considered in this analysis and may affect quality of life assessments. The study
25
26 was carried out in the South West of the UK, and although the study population is
27
28 not dissimilar to the UK demographic data presented within the UK severe asthma
29
30 registry [26], the population was predominantly Caucasian and further validation in
31
32 ethnically and culturally diverse populations is required. The literacy level required to
33
34 use the SAQ is at least age 11-12 years old reading level, but this is consistent with
35
36 current literacy requirements for patient communication [27]. The 15-item MiniAQLQ
37
38 rather than the 32-item AQLQ was used as a comparison scale to reduce
39
40 questionnaire fatigue and because the MiniAQLQ is similar in length the SAQ. Nine
41
42 patients participating in this study also participated in an earlier qualitative work [13].
43
44
45
46
47
48

49 .The SAQ is structured so that the global measure appears after the 16 context
50
51 specific items, and this order of presentation may have an effect. Research shows
52
53 that prior exposure to a negative event (i.e., asking patients about difficulty in
54
55 different contexts), will lead to a more positive subsequent judgement [28,29].
56
57
58
59
60

1
2
3 Further research is needed to explore how contextual factors, including the order of
4 presentation of different questions influences quality of life judgements.
5
6
7

8 9 10 Conclusions

11
12 The SAQ was designed to detect the impact of both asthma symptoms and
13 treatment on quality of life and has been shown to be content valid in earlier studies
14 [10, 13]. This paper confirms the relevance of items based on the earlier studies,
15 establishes the construct validity of the scale and shows it to be a reliable in a group
16 of patients with severe asthma with different types of treatment. These data
17 complete the validation procedures required by the FDA. Longitudinal studies are
18 required to provide further information about the scale, for example, to establish
19 sensitivity to change and the minimally clinically important difference in people with
20 severe asthma. The SAQ is available for use in the British English version reported
21 here and is available from the authors or online (www.saq.org.uk). Translations in
22 other languages are required. In addition to providing a scale that is fit for purpose
23 [10] for assessing health related quality of life in clinical trials, the SAQ can also be
24 used in clinical practice to alert clinicians to the problems experienced by patients,
25 and to gain an initial insight into the patients' own perceptions of the impact of illness
26 and its treatment on their lives.
27
28
29
30
31
32
33
34
35
36
37
38
39
40
41
42
43
44
45
46

47 **Acknowledgements**

48
49
50 RJ and JL were supported by the National Institute for Health Research (NIHR)
51 Collaboration for Leadership in Applied Health Research and Care South West
52 Peninsula (NIHR CLAHRC South West Peninsula). The views expressed are those
53
54
55
56
57
58
59
60

1
2
3 of the authors and not necessarily those of the NHS, the NIHR or the Department of
4
5 Health and Social Care. We acknowledge Jill Pooler's early work in the project
6
7 including help in preparing for and obtaining NHS and REC/HRA ethical approval.
8
9 Mike Thomas provided helpful comments on an earlier draft. We would also like to
10
11 thank the staff at Derriford Hospital's Chest Clinic for their assistance with this
12
13
14 project.
15
16
17
18
19
20
21
22
23
24
25
26
27
28
29
30
31
32
33
34
35
36
37
38
39
40
41
42
43
44
45
46
47
48
49
50
51
52
53
54
55
56
57
58
59
60

References

1. Chung KF, Wenzel SE, Brozek JL, Bush A, Castro M, Sterk PJ, Adcock IM, Bateman ED, Bel EH, Bleecker ER, Boulet LP. International ERS/ATS guidelines on definition, evaluation and treatment of severe asthma. *Eur Respir J* 2013; 43(2): 343-373.
2. O'Neill S, Sweeney J, Patterson CC, Menzies-Gow A, Niven R, Mansur AH, Bucknall C, Chaudhuri R, Thomson NC, Brightling CE, O'Neill C. The cost of treating severe refractory asthma in the UK: an economic analysis from the British Thoracic Society Difficult Asthma Registry. *Thorax*. 2014; 70(4): 376-378.
3. Wilson SR, Rand CS, Cabana MD, Foggs MB, Halterman JS, Olson L, Vollmer WM, Wright RJ, Taggart V. Asthma outcomes: quality of life. *J Allergy Clin Immunol* 2012; 129(3):S88-123.
4. Sweeney J, Patterson CC, Menzies-Gow A, Niven RM, Mansur AH, Bucknall C, Chaudhuri R, Price D, Brightling CE, Heaney LG. Comorbidity in severe asthma requiring systemic corticosteroid therapy: cross-sectional data from the Optimum Patient Care Research Database and the British Thoracic Difficult Asthma Registry. *Thorax* 2016; 71(4): 339-346.
5. U.S. Department of Health and Human Services Food and Drug Administration. Guidance for Industry Patient-Reported Outcome Measures: use in Medical Product Development to Support Labeling Claims, 2009.
6. Juniper EF, Guyatt GH, Ferrie PJ, Griffith LE. Measuring quality of life in asthma. *Am Rev Respir Dis* 1993;147(4): 832-823.
7. Juniper EF, Guyatt GH, Cox FM, Ferrie PJ, King DR . Development and validation of the Mini Asthma Quality of Life Questionnaire. *Eur Respir J* 1999; 14(1): 32 -38.

- 1
2
3 8. Jones PW, Quirk FH, Baveystock CM, Littlejohns P. A self-complete measure of
4 health status for chronic airflow limitation. *Am Rev Respir Dis.* 1992;
5 145(6):1321-1327.
6
7
- 8
9 9. Apfelbacher CJ, Jones CJ, Frew A, Smith H. Validity of three asthma-specific
10 quality of life questionnaires: the patients' perspective. *BMJ open*; 2016;
11 6(12):e011793.
12
13
- 14
15 10. Hyland ME, Whalley B, Jones RC, Masoli M. A qualitative study of the impact of
16 severe asthma and its treatment showing that treatment burden is neglected in
17 existing asthma assessment scales. *Qual Life Res* 2015; 24(3):631-639.
18
19
- 20
21 11. Edwards, M. C., Slagle, A., Rubright, J. D., & Wirth, R. J. (2017). Fit for purpose
22 and modern validity theory in clinical outcomes assessment. *Qual Life Res*, First
23 online, July, 1-10
24
25
- 26
27 12. Anastasi A. *Psychological Testing* (3rd edition). New York: Macmillan 1968.
28
29
- 30
31 13. Hyland ME, Lanario JW, Pooler J, Masoli M, Jones RC. How patient participation
32 was used to develop a questionnaire that is fit for purpose for assessing quality
33 of life in severe asthma. *Health and quality of life outcomes.* 2018; 16(1):24.
34
35
- 36
37 14. Hedman AS. Using the SMOG formula to revise a health-related document.
38 *American Journal of Health Education.* 2008; 39(1):61-4.
39
40
- 41
42 15. Kahneman D. *Thinking, fast and slow.* Macmillan: 2011.
43
44
- 45
46 16. Feng Y, Parkin D, Devlin NJ. Assessing the performance of the EQ-VAS in the
47 NHS PROMs programme. *Quality of Life Research.* 2014; 23(3):977-89.
48
49
- 50
51 17. Borg, G. A. Psychophysical bases of perceived exertion. *Med Sci Sports &*
52 *Exerc*; 14(5): 377-381.
53
54
55
56
57
58
59
60

- 1
2
3 18. Hyland ME, Sodergren SC. Development of a new type of global quality of life
4 scale, and comparison of performance and preference for 12 global scales.
5 Quality of Life Research. 1996; 5(5):469-80.
6
7
8
9 19. Nathan RA, Sorkness CA, Kosinski M, Schatz M, Li JT, Marcus P, Murray JJ,
10 Pendergraft TB. Development of the asthma control test: a survey for assessing
11 asthma control. Journal of Allergy and Clinical Immunology. 2004; 113(1):59-65.
12
13
14 20. Herdman M, Gudex C, Lloyd A, Janssen MF, Kind P, Parkin D, Bonzel G, Badia
15 X. Development and preliminary testing of the new five-level version of EQ-5D
16 (EQ-5D-5L). Quality of life research. 2011; 20(10):1727-36.
17
18
19
20
21
22 21. BTS/SIGN. SIGN 153 • British guideline on the management of asthma.
23
24 <https://www.britthoracic.org.uk/documentlibrary/clinicalinformation/asthma/btssig>
25 [n-asthma-guideline-2016/](https://www.britthoracic.org.uk/documentlibrary/clinicalinformation/asthma/btssig). Date last updated: September 1 2016. Date last
26 accessed: April 27 2018.
27
28
29
30
31 22. GINA. 2018 GINA Report, Global Strategy for Asthma Management and
32 Prevention. [http://ginasthma.org/2018-gina-report-global-strategy-for-asthma-](http://ginasthma.org/2018-gina-report-global-strategy-for-asthma-management-and-prevention/)
33 [management-and-prevention/](http://ginasthma.org/2018-gina-report-global-strategy-for-asthma-management-and-prevention/) . Date last updated: March 29 2018. Date last
34 accessed: April 27 2018
35
36
37
38
39
40 23. Costello AB, Osborne JW. Best practices in exploratory factor analysis: Four
41 recommendations for getting the most from your analysis. Practical assessment,
42 research & evaluation 2005; 10(7):1-9.
43
44
45
46 24. Osborne JW. Best practices in exploratory factor analysis. CreateSpace
47 Independent Publishing Platform; 2014.
48
49
50
51 25. Stucky BD, Sherbourne CD, Edelen MO, Eberhart NK. Understanding asthma-
52 specific quality of life: moving beyond asthma symptoms and severity. European
53 Respiratory Journal. 2015; 46(3):680-7.
54
55
56
57
58
59
60

- 1
2
3 26. Heaney LG, Brightling CE, Menzies-Gow A, Stevenson M, Niven RM, on behalf
4
5 of the British Thoracic Society Difficult Asthma Network. Refractory asthma in
6
7 the UK: cross-sectional findings from a UK multicentre registry. *Thorax*. 2010;
8
9 65(9):787-794.
10
11 27. Paasche-Orlow MK, Taylor HA and Brancati FL. Readability standards for
12
13 informed-consent forms as compared with actual readability. *N Engl J Med* 2003;
14
15 348: 721–726.
16
17 28. Johnson JT. The knowledge of what might have been: Affective and attributional
18
19 consequences of near outcomes. *Personality and Social Psychology Bulletin*.
20
21 1986;12(1):51-62
22
23 29. Medvec VH, Madey SF, Gilovich T. When less is more: counterfactual thinking
24
25 and satisfaction among Olympic medalists. *J Pers Soc Psychol*. 1995; 69(4):603.
26
27
28
29
30
31
32
33
34
35
36
37
38
39
40
41
42
43
44
45
46
47
48
49
50
51
52
53
54
55
56
57
58
59
60

Table 1.
Demographic information for all patients, those at GINA step 4 and step 5 of treatment.

	All (N=160)*	GINA Step 4 (N=100)	GINA Step 5 (N=59)
Female (%)	107 (66)	67 (67)	40 (67)
Age (range)	51 (16-78)	49 (16-74)	55 (25-78)
FEV1 (Litres) (range)	2.0 (0.7 - 4.4)	2.2 (0.72-4.3)	1.8 (0.7-3.6)
FEV1 (% predicted) (range)	72 (28 - 137)	75 (28-137)	65 (34-107)
Caucasian (%)	98	-	-
BMI (range)	31.8 (18.2-58.3)	31.0 (19.0 -58.3)	33.3 (20.7-57.9)
Median ICS dose (BDP equivalent mcg/d) (range)	1600 (400-4000)	1600 (800- 4000)	2000 (1000- 4000)
Number on Biologics			
Omalizumab	34 (21%)		
Mepolizumab	4 (3%)		

*One patient at GINA step 2 was included erroneously but included in the intention to treat analysis, see results section

Table 2. Pearsons' correlations between all six scales, BMI and FEV1 percent predicted (n)

	SAQ-score	MiniAQLQ-score	ACT-total	EQ-5D-5L score	EQ5D-VAS	SAQ global score
MiniAQLQ-score	0.76*** (140)	-	-	-	-	-
ACT-total	0.68*** (154)	0.84*** (145)	-	-	-	-
EQ-5D-5L score	-0.76*** (97)	-0.72*** (99)	-0.67*** (100)	-	-	-
EQ5D- VAS	0.71*** (96)	0.76*** (98)	0.66*** (99)	-0.79*** (98)	-	-
SAQ global scale	0.72*** (158)	0.71*** (140)	0.68*** (154)	-0.71*** (97)	0.76*** (97)	-
BMI	-0.31*** (154)	-0.25** (146)	-0.25** (159)	0.44*** (100)	-0.24* (100)	-0.22** (154)
FEV1 percent predicted	0.27** (154)	0.30*** (146)	0.24** (159)	-0.13 (100)	0.16 (100)	0.26** (154)

* $p < 0.05$, ** $p < 0.01$, *** $p < 0.001$

Table 3.

Mean, Standard Deviation, factor loadings, and the percentage of participants responding 'very difficult' or 'very, very difficult' to each of the 16 items of the Severe Asthma Questionnaire

Item	Mean*	Standard Deviation	Percentage of patients responding 'very difficult' or 'very, very difficult'	Factor loading
1. My social life. For example: visiting friends, walking with friends, talking with friends, going to bars/restaurants, and parties.	4.11	1.94	25.2%	0.88
2. My personal life. For example: washing, dressing, looking after myself, love life.	4.98	1.98	15.0%	0.81
3. My leisure activities. For example: walking for pleasure, sports, exercise, travelling, taking vacations.	3.54	1.95	37.5%	0.84
4. My jobs around the house. For example: housework, shopping, home maintenance, gardening.	3.96	1.92	27.2%	0.88
5. My work or education. For example, missing days, can't do all I want to do.	4.78	2.64	25.7%	0.6
6. My family life – how it affects me. For example: caring for children, family responsibilities	4.59	2	19.6%	0.87
7. My family life – how it affects others. For example: others taking time off work, problems with childcare, family members becoming upset.	4.74	2.1	18.3%	0.82
8. Depression. For example, feeling sad, fed up, blue.	4.05	1.98	29.0%	0.81
9. Irritable. For example, snap at people, get angrier than I should.	4.06	1.99	27.8%	0.77
10. Anxiety in general. For example, worry about things, always on edge.	4.03	2.1	29.7%	0.75

11. Worry that asthma may get worse. For example, medicines no longer help, more frequent attacks.	3.7	2.04	39.2%	0.71
12. Worry about long term side effects of medicines. For example, worry about cataracts, diabetes, bone fracture.	3.92	2.12	33.8%	0.66
13. Getting tired. For example, feeling tired for no reason, waking in the morning feeling tired.	3.16	1.9	43.3%	0.79
14. Problems at night. For example, difficulty going to sleep, being woken very easily, waking often at night.	3.5	1.99	39.2%	0.79
15. The way I look. For example, my weight, my skin bruises easily, using medicines in public, other people judging me	3.65	2.17	39.9%	0.68
16. Problems with food. For example, I find I get very hungry, I just can't stop eating, stomach problems (e.g., pain, bloating, etc.)	4.27	2.07	26.8%	0.67

* Interpretation of mean: In relation to quality of life, 1 = very, very difficult (worst possible); 2 = very difficult; 3 = difficult; 4 = moderately difficult; 5 = slightly difficult; 6 = very slightly difficult (just noticeable); 7 = no problem.

Table 4.

Mean, confidence intervals and *n-values* questionnaire scores and *n* at different levels of prednisolone dose

	Maintenance prednisolone dose ranges (mg/day)			
	0	1-9	10	>10
SAQ-score	4.23 <u>3.93-4.54</u> 99	5.18 <u>4.55-5.81</u> 16	3.67 <u>2.96-4.40</u> 18	2.45 <u>1.90-3.00</u> 21
MiniAQLQ-score	4.20 <u>3.90-4.49</u> 92	5.21 <u>4.54-5.89</u> 16	3.57 <u>2.82-4.31</u> 18	2.89 <u>2.24-3.52</u> 20
ACT-total	14.36 <u>13.28-15.43</u> 101	19.63 <u>16.48-22.77</u> 16	12.00 <u>9.31-14.69</u> 20	10.36 <u>7.94-12.78</u> 22
EQ-5D-5L score	2.01 <u>1.79-2.23</u> 60	1.69 <u>1.24-2.14</u> 15	2.69 <u>2.14-3.23</u> 13	3.11 <u>2.48-3.75</u> 12
EQ-5D-VAS	65.40 <u>59.67-71.13</u> 60	70.47 <u>62.46-78.47</u> 15	55.77 <u>45.37-66.15</u> 13	35.67 <u>17.07-54.26</u> 12
SAQ-global score	58.92 <u>55.18-63.50</u> 97	66.38 <u>59.68-75.26</u> 17	51 <u>41.44-60.56</u> 20	34.05 <u>22.88-45.21</u> 21

Note: a lower score for the SAQ-score, MiniAQLQ, ACT total, EQ5D-VAS and SAQ-Global score indicates low quality of life/health. A high score for the EQ-5D-5L score indicates poor health.

Table 5.

Mean, confidence intervals and *n*-values questionnaire scores and *n* at different doses of estimated cumulative OCS .

	Estimated annual cumulative dose (mg/year)				
	0-1119	1120-1460	1461-3650	3651-6595	>6595
SAQ-score	4.52 <u>4.18- 4.85</u> 77	4.20 <u>3.49-4.91</u> 21	4.29 <u>3.56-5.02</u> 20	3.03 <u>2.52-3.55</u> 21	2.29 <u>1.60-2.99</u> 15
MiniAQLQ-score	4.45 <u>4.13-4.76</u> 71	4.32 <u>3.60-5.03</u> 22	4.33 <u>3.48-5.17</u> 18	3.24 <u>2.63-3.85</u> 20	2.65 <u>1.99-3.10</u> 15
ACT-total	15.19 <u>13.99-16.39</u> 79	16.14 <u>13.35-18.94</u> 21	14.62 <u>11.27-17.97</u> 21	11.14 <u>8.87-13.40</u> 22	8.81 <u>6.84 -10.79</u> 16
EQ-5D-5L score	1.89 <u>1.64-2.15</u> 46	2.02 <u>1.59-2.46</u> 17	2.03 <u>1.49-2.57</u> 13	2.67 <u>2.17-3.17</u> 15	3.40 <u>2.81-3.99</u> 9
EQ5D-VAS	66.85 <u>60.33-73.38</u> 48	71.67 <u>63.38-79.95</u> 15	60.15 <u>47.34-72.97</u> 13	57.67 <u>48.86-66.48</u> 15	22.56 <u>7.97-37.14</u> 9
SAQ-global score	61.45 <u>56.90-66.01</u> 75	62.76 <u>54.15-71.37</u> 21	54.52 <u>44.37-64.67</u> 21	47.95 <u>38.78-57.12</u> 22	25.67 <u>15.64-35.70</u> 15

Note: a lower score for the SAQ, MiniAQLQ, ACT total, EQ5D-VAS and SAQ-Global score indicates low quality of life/health. A high score for the EQ-5D-5L score indicates poor health.

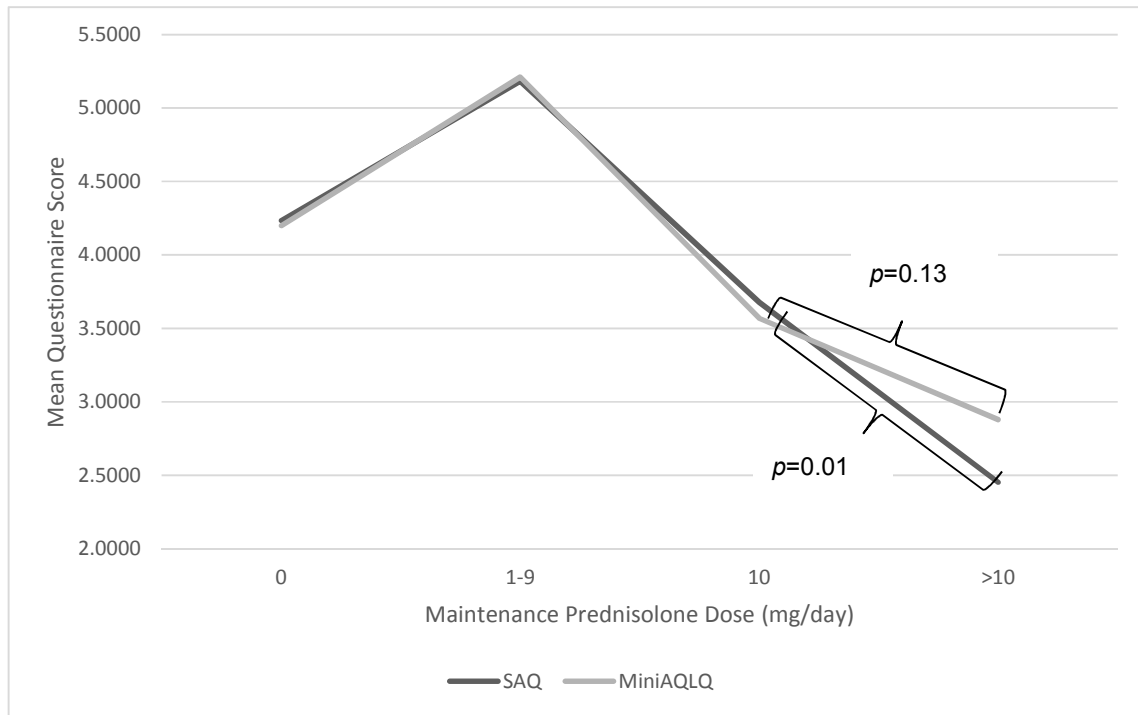


Figure 1. Mean SAQ and MiniAQLQ scores as a function of maintenance prednisolone dose (mg/day). When comparing 10mg to >10mg/day of maintenance prednisolone use, the SAQ detects a statistically significant difference in mean questionnaire score, but the mini-AQLQ does not.

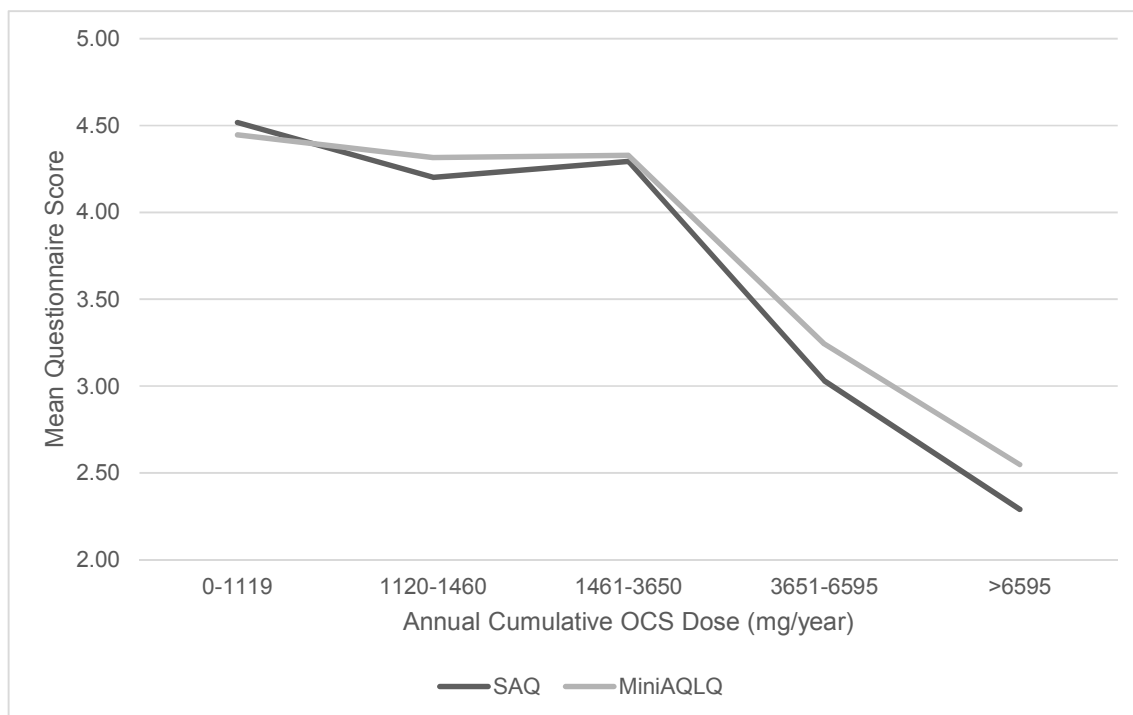


Figure 2. Mean SAQ and MiniAQLQ scores as a function of estimated annual cumulative OCS dose.

Online Supplementary Data

Content validity of the Severe Asthma Questionnaire from earlier studies

Findings of the initial patient interviews included (see [10] for more details):

- Identification of domains that included deficits caused by symptoms of severe asthma as well as side effects of medication.
- A failure of existing asthma specific quality of life scales to assess all the domains to severe asthma.

Findings of the four focus groups included (see [13] for more details):

- The recall period of two weeks was acceptable, but a two week window fails to reflect the patients' desire to express the variability of severe asthma. Patients welcomed the ability to rate their global quality of life during the worst and best months of the year.
- Patients suggested improvements to the wording of the draft questionnaire, including splitting some items in two (the items relating to family life), combining two items in one (relating to appearance and embarrassment).
- Patients suggested changes to some of the words in individual items and the response scale.
- Patients can help optimise the language of a questionnaire better if they are treated as partners in the process of questionnaire completion rather than only as a source of information.

Criteria for incomplete questionnaires

For the SAQ and MiniAQLQ, questionnaires were considered incomplete if more than one question was missed excluding the question on work. In the case of the SAQ patients are instructed not to answer this question if not in work. In the case of the MiniAQLQ patients often miss this question even though they are instructed to answer it in terms of other activities if not in work. For the ACT a questionnaire was considered incomplete if one or more questions were missed. An EQ-5D-5L was considered incomplete if two of more questions were missed.

If patients are not in work, then the SAQ score is the average of the 15 lifestyle questions that do not refer to work. If patients are in work, then an extra domain is added because patients then have an extra domain of quality of life. Using this procedure, the non-work domains are the same for in and out of work patients. In the case of the MiniAQLQ, if patients are not in work, then they are asked to answer the work question in terms of other activities. Although the average MiniAQLQ score is obtained from the same number of questions for in work our out of work patients, the non-work domains no longer the same for in and out of work patients because the out of work patients are answering an additional non-work domain. An aim of content validity is to ensure that questions are interpreted in the same way by different patients. The procedure used by the SAQ achieves this aim and removes the inconsistency of some out of work patients completing the work item of the MiniAQLQ and some not doing so, which in the present study was 25 out of 160 participants.

Table E1.

SAQ response option frequencies

Item	1	2	3	4	5	6	7	Missing
1. My social life. For example: visiting friends, walking with friends, talking with friends, going to bars/restaurants, and parties.	14	26	26	28	21	15	29	1
2. My personal life. For example: washing, dressing, looking after myself, love life.	6	18	21	21	18	15	61	0
3. My leisure activities. For example: walking for pleasure, sports, exercise, travelling, taking vacations.	25	35	31	19	17	14	19	0
4. My jobs around the house. For example: housework, shopping, home maintenance, gardening.	17	26	28	26	19	21	21	2
5. My work or education. For example, missing days, can't do all I want to do.	18	18	14	18	13	13	34	32
6. My family life – how it affects me. For example: caring for children, family responsibilities	10	20	23	20	17	23	40	7
7. My family life – how it affects others. For example: others taking time off work, problems with childcare, family members becoming upset.	10	18	26	19	9	17	54	7
8. Depression. For example, feeling sad, fed up, blue.	16	29	23	20	23	19	25	5
9. Irritable. For example, snap at people, get angrier than I should.	17	27	23	27	16	22	26	2
10. Anxiety in general. For example, worry about things, always on edge.	23	24	27	15	16	26	27	2

1									
2									
3	11. Worry that asthma may get worse. For	21	41	23	14	21	14	24	2
4	example, medicines no longer help, more								
5	frequent attacks.								
6									
7									
8	12. Worry about long term side effects of	27	26	17	23	17	20	27	3
9	medicines. For example, worry about								
10	cataracts, diabetes, bone fracture.								
11									
12									
13	13. Worry about long term side effects of	38	32	32	15	15	15	11	2
14	medicines. For example, worry about								
15	cataracts, diabetes, bone fracture.								
16									
17									
18	14. Problems at night. For example,	31	31	25	20	17	18	16	2
19	difficulty going to sleep, being woken very								
20	easily, waking often at night.								
21									
22									
23	15. The way I look. For example, my	35	28	20	17	16	16	26	2
24	weight, my skin bruises easily, using								
25	medicines in public, other people judging								
26	me								
27									
28	16. Problems with food. For example, I find	21	21	13	28	18	25	31	3
29	I get very hungry, I just can't stop eating,								
30	stomach problems (e.g., pain, bloating,								
31	etc.)								
32									

Response options: 1 = very, very difficult (worst possible); 2 = very difficult; 3 = difficult; 4 = moderately difficult; 5 = slightly difficult; 6 = very slightly difficult (just noticeable); 7 = no problem

33
34
35
36
37
38
39
40
41
42
43
44
45
46
47
48
49
50
51
52
53
54
55
56
57
58
59
60

Table E2.**Intra-class correlation, confidence intervals and *n-values* for the 16 items of the SAQ**

Item	Intra-class correlation
1. My social life. For example: visiting friends, walking with friends, talking with friends, going to bars/restaurants, and parties.	0.89 <u>0.80-0.94</u> 50
2. My personal life. For example: washing, dressing, looking after myself, love life.	0.86 <u>0.75-0.92</u> 50
3. My leisure activities. For example: walking for pleasure, sports, exercise, travelling, taking vacations.	0.93 <u>0.88-0.96</u> 51
4. My jobs around the house. For example: housework, shopping, home maintenance, gardening.	0.88 <u>0.79-0.93</u> 51
5. My work or education. For example, missing days, can't do all I want to do.	0.87 <u>0.72-0.94</u> 27
6. My family life – how it affects me. For example: caring for children, family responsibilities	0.89 <u>0.81-0.94</u> 46
7. My family life – how it affects others. For example: others taking time off work, problems with childcare, family members becoming upset.	0.87 <u>0.76-0.93</u> 46
8. Depression. For example, feeling sad, fed up, blue.	0.85 <u>0.73-0.91</u> 51
9. Irritable. For example, snap at people, get angrier than I should.	0.85 <u>0.74-0.91</u> 51
10. Anxiety in general. For example, worry about things, always on edge.	0.84 <u>0.71-0.91</u>

1		
2		
3		51
4	11. Worry that asthma may get worse. For example, medicines no longer help,	0.84
5	more frequent attacks.	<u>0.73-0.91</u>
6		
7		51
8		
9	12. Worry about long term side effects of medicines. For example, worry about	0.66
10	cataracts, diabetes, bone fracture.	<u>0.40-0.81</u>
11		
12		50
13		
14	13. Worry about long term side effects of medicines. For example, worry about	0.88
15	cataracts, diabetes, bone fracture.	<u>0.78-0.93</u>
16		
17		51
18		
19	14. Problems at night. For example, difficulty going to sleep, being woken very	0.84
20	easily, waking often at night.	<u>0.71-0.91</u>
21		
22		51
23		
24	15. The way I look. For example, my weight, my skin bruises easily, using	0.86
25	medicines in public, other people judging me	<u>0.75-0.92</u>
26		
27		51
28		
29	16. Problems with food. For example, I find I get very hungry, I just can't stop	0.77
30	eating, stomach problems(e.g., pain, bloating, etc.)	<u>0.59-0.87</u>
31		
32		50
33		
34	<hr/>	
35		
36		
37		
38		
39		
40		
41		
42		
43		
44		
45		
46		
47		
48		
49		
50		
51		
52		
53		
54		
55		
56		
57		
58		
59		
60		

Table E3. Relationship between SAQ and SAQ-global scores

SAQ-global score and descriptors* of quality of life	Number of patients	Mean SAQ score** (SD)
0-9 Extremely bad	4	1.5 (0.6)
10-19 Very bad	6	3.0 (1.9)
20-29 Bad	10	2.0 (0.7)
30-39	12	2.7 (1.0)
40-49 Somewhat bad	26	3.3 (0.7)
50-59	21	3.8 (0.8)
60-69 Moderately good	19	4.3 (1.5)
70-79 Good	31	4.8 (1.1)
80-89 Very good	17	5.5 (1.6)
90-100 Nearly perfect/Perfect	8	6.4 (0.9)

*The position of descriptors is approximate in relation to numbers. The exact position is shown in the SAQ.

** Interpretation of mean: 1 = very, very difficult (worst possible); 2 = very difficult; 3 = difficult; 4 = moderately difficult; 5 = slightly difficult; 6 = very slightly difficult (just noticeable); 7 = no problem